

**GEORGES
DUBœUF**



2016 VINTAGE PREVIEW

GEORGES
DUBœUF



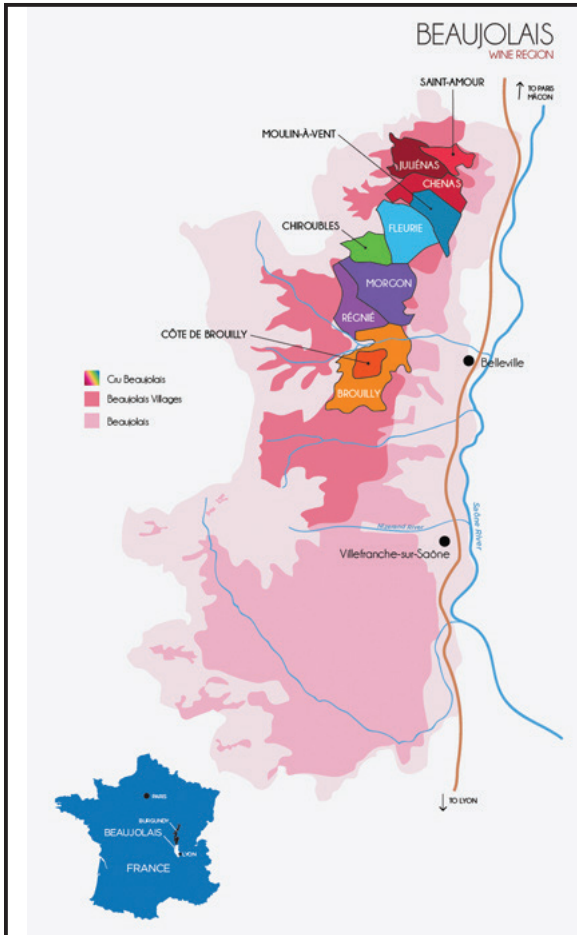
“**F**or those who have long been enchanted by the freshness, expressiveness, and elegance of Beaujolais, the 2016 vintage will be delightfully “textbook” in the way these wines have evolved. The 2016 vintage shows the balance and finesse that lovers of Beaujolais have come to expect from Gamay, while in the Mâconnais, the vintage showed a return to the tension, acidity and minerality that was supplanted by richness and fruit in the wines of the 2015 vintage. The wines of the 2016 vintage will provide a welcome distraction while patient wine lovers wait for the wines of the 2015 vintage to come into their own. With the 2016 vintage, we go back to the DNA of Beaujolais: a wine to relish for its freshness, suppleness, extravagant perfume, bright fruit and fine tannins. The 2016 wines show fine ripeness balanced with structure and vibrant acidity.”

Georges Duboeuf



FAMILY OF WINEMAKERS





HISTORY

The Romans were the first to plant vineyards, followed by the Benedictine monks in the Middle Ages. The Dukes of Beaujeu (for whom the region is named) made the wines fashionable. When the railroads were built in the 19th century, Beaujolais' popularity spread even further, especially to Paris, when the craze for 'Nouveau' or "en Primeur" began.

The town of Lyon was the main market for Beaujolais wine. At the time, goods from outside the area were subject to heavy taxes, making the local wine even more appealing and in demand.

ABOUT THE REGION

Beaujolais can be compared to the smallest house in the fanciest neighborhood. It's bordered by Burgundy to the North; the Saône River (which leads to Côtes du Rhône) to the East; the 'Gastronomic Capital of France', Lyon, to the South; and the Monts de Beaujolais (the hills of the Massif Central) on the West. Beaujolais is just 34 miles long and 7-9 miles wide. The three classifications are: Beaujolais AOC, Beaujolais-Villages AOC and Cru Beaujolais.

The area is naturally divided into two sections by the Nizerand River. You'll find different soils on each side of the river. This is important to note because the soil types hold the key to Beaujolais' flavor. There's mostly granite and schist (decomposed rock) to the North and clay-based soils (marl) to the South. All of the Cru vineyards are located on the North side.



HISTORY

Within a natural isosceles triangle formed by Mâcon in the south, Tournos in the east and Cluny in the west, the noble and eminently Burgundian Chardonnay grape reigns as absolute monarch, due to the chalk-rich soil that is known to give distinction to its white wines. This is the southern part of the world-famous wine province of Burgundy, with its gently rolling hills and lush vineyards. The white wines known as Mâcon-Villages come from some 40 different villages that lie to the north and west of Mâcon and the tranquil Saône river. Hillside slopes provide ideal exposure to the sun, also providing excellent ventilation and drainage.

GEORGES DUBOEF MÂCON-VILLAGES 2016

REGION

Mâconnais

APPELLATION

Mâcon-Villages

SURFACE IN ACRES

N/A

AGE OF VINES

Over 20 years

RESIDUAL SUGAR

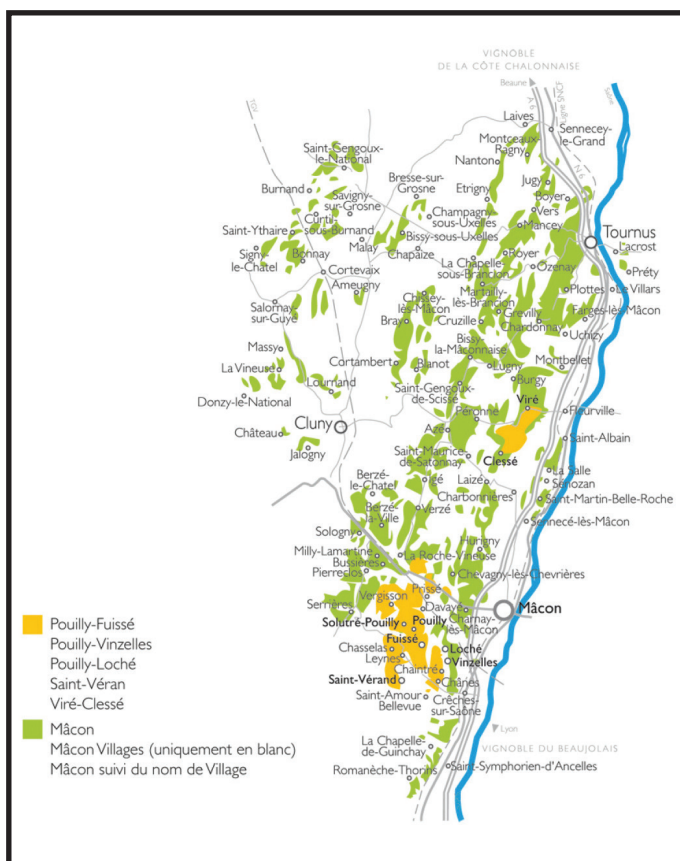
1.0 g/l

pH

3.45

TOTAL ACIDITY

4.9 g/l



ACCOLADES

90 Points - 2016 Vintage - James Suckling

NOTES



FAMILY HISTORY

The Lenoir family that owns “*Domaine Les Chenevières*” has lived and worked in Saint-Maurice-de-Satonnay for generations. The home on the property where the family lives was built over 300 years ago. The duties of winemaker have passed from father to son in this family for five generations. This estate terroir magnifies the Chardonnay grape and produces a superb Mâcon-Villages, marked by its aromatic complexity and exceptional minerality.

MÂCON-VILLAGES

Within a natural isosceles triangle formed by Mâcon in the south, Tournos in the east and Cluny in the west, the noble and eminently Burgundian Chardonnay grape reigns as absolute monarch, due to the chalk-rich soil that is known to give distinction to its white wines. This is the southern part of the world-famous wine province of Burgundy, with its gently rolling hills and lush vineyards. The white wines known as Mâcon-Villages come from some 40 different villages that lie to the north and west of Mâcon and the tranquil Saône river. Hillside slopes provide ideal exposure to the sun, also providing excellent ventilation and drainage.

DOMAINE LES CHENEVIÈRES MÂCON-VILLAGES 2016

REGION

Mâconnais

APPELLATION

Mâcon-Villages

SURFACE IN ACRES

66.7

AGE OF VINES

Over 20 years

RESIDUAL SUGAR

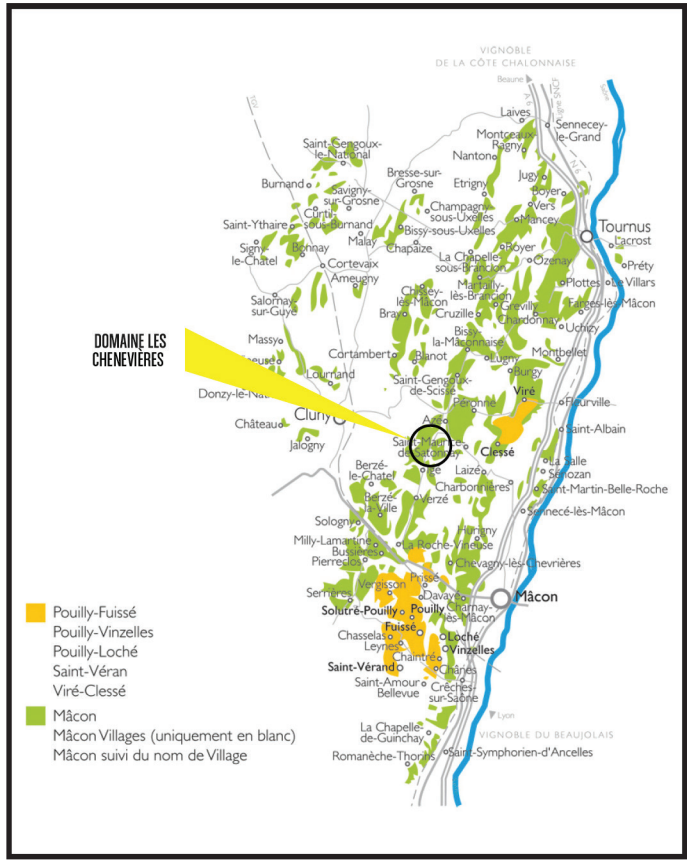
1.4 g/l

pH

3.29

TOTAL ACIDITY

5.12 g/l



NOTES



HISTORY

The Saint-Véran AOC, which was granted in 1971, lies in the South of the Mâconnais region, forming a belt around the appellation Pouilly-Fuissé. The appellation spreads across 7 production communes: Chânes, Chasselas, Davayé, Leynes, Fuissé, Saint Vérand and Solutré-Pouilly, and produces wines made from Chardonnay, exclusively. Similar to Pouilly-Fuisse, the soil of Saint-Véran is made up, mostly, of limestone, with outcroppings of grey and marly limestones, often overlain with a layer of clay. The style and characteristic of Saint-Véran falls somewhat in between Mâcon-Villages and Pouilly-Fuissé, with notes of peach, pear and honeysuckle, along with fresh almond, hazelnut and honey. It is dry and well rounded with fresh minerality and a harmonious balance between acidity and richness.

REGION

Mâconnais

APPELLATION

Saint-Véran

SURFACE IN ACRES

N/A

AGE OF VINES

Over 20 years

RESIDUAL SUGAR

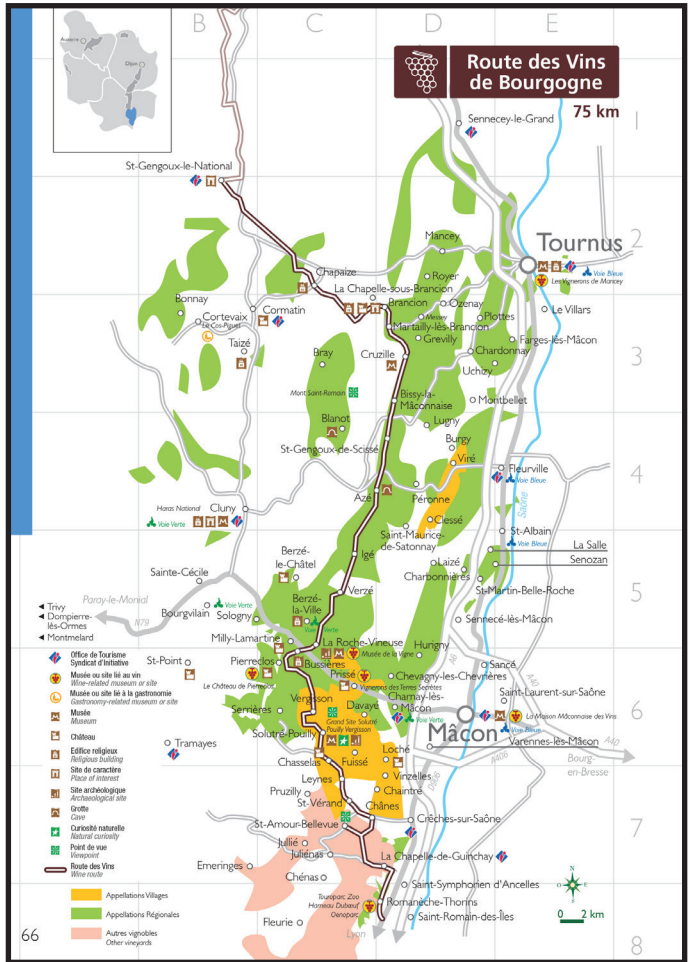
1.7 g/l

pH

3.46

TOTAL ACIDITY

5.13 g/l



NOTES



HISTORY

Pouilly-Fuissé is the best known appellation in the Mâconnais, situated along the rocky outcrops of Solutré and Vergisson, along a foundation of fossiliferous limestone similar to that found further north in the Côte-d'Or. Vineyards are planted on clay-limestone soils of Jurassic origin at 650 - 1,00 feet elevation. The wines of Pouilly-Fuisse are made exclusively of Chardonnay, and are beloved for their elegance and charm, typically exhibiting a rich mouthfeel and complex structure complemented by delicate, full flavors of white flowers, citrus and honey with fine minerality.

REGION

Mâconnais

APPELLATION

Pouilly-Fuissé

SURFACE IN ACRES

N/A

AGE OF VINES

Over 20 years

RESIDUAL SUGAR

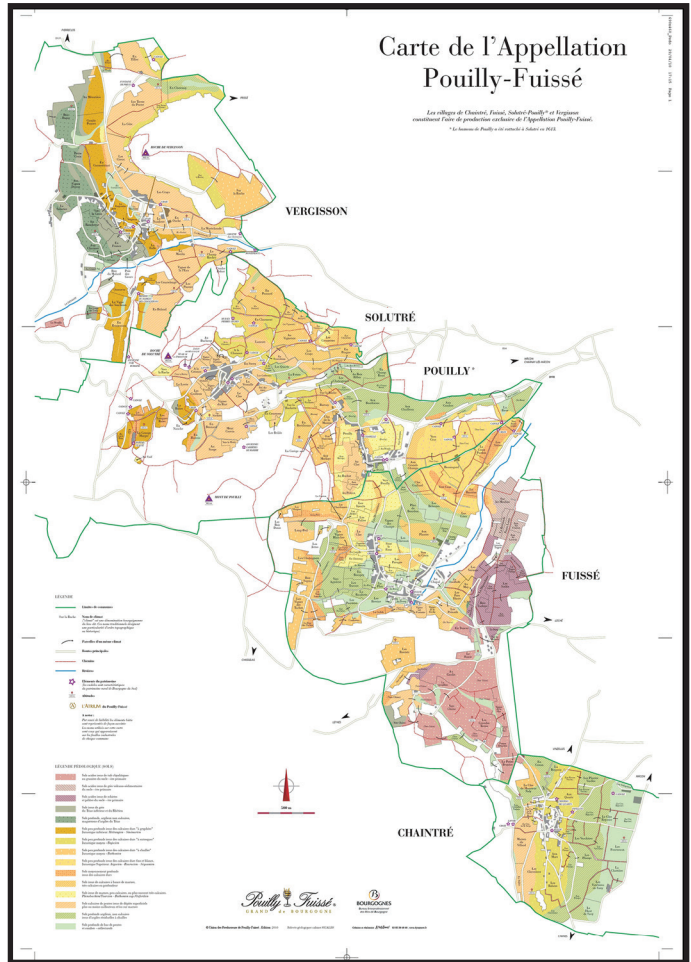
1.6 g/l

pH

3.43

TOTAL ACIDITY

5.05 g/l



ACCOLADES

90 Points - 2016 Vintage - *James Suckling*

90 Points - 2015 Vintage - *Wine Spectator*

NOTES



FAMILY HISTORY

The Béranger family has resided in Pouilly, a hamlet of Solutré, for more than 200 years and has been dedicated to crafting artisanal wines for at least that long. The family strives to produce the finest wines of the Mâconnais, fully expressing the unique terroir of Pouilly-Fuissé. This wine represents a blend of grapes grown from various parcels throughout Pouilly-Fuissé to craft a wine that embodies the best qualities of the region in any given vintage.

POUILLY-FUISSÉ

Pouilly-Fuissé is the best known appellation in the Mâconnais, situated along the rocky outcrops of Solutré and Vergisson, along a foundation of fossiliferous limestone similar to that found further north in the Côte-d'Or. Vineyards are planted on clay-limestone soils of Jurassic origin at 650 - 1,00 feet elevation. The wines of Pouilly-Fuisse are made exclusively of Chardonnay, and are beloved for their elegance and charm, typically exhibiting a rich mouthfeel and complex structure complemented by delicate, full flavors of white fruit, citrus and honey with fine minerality.

REGION

Mâconnais

APPELLATION

Pouilly-Fuissé

SURFACE IN ACRES

N/A

AGE OF VINES

Over 20 years

RESIDUAL SUGAR

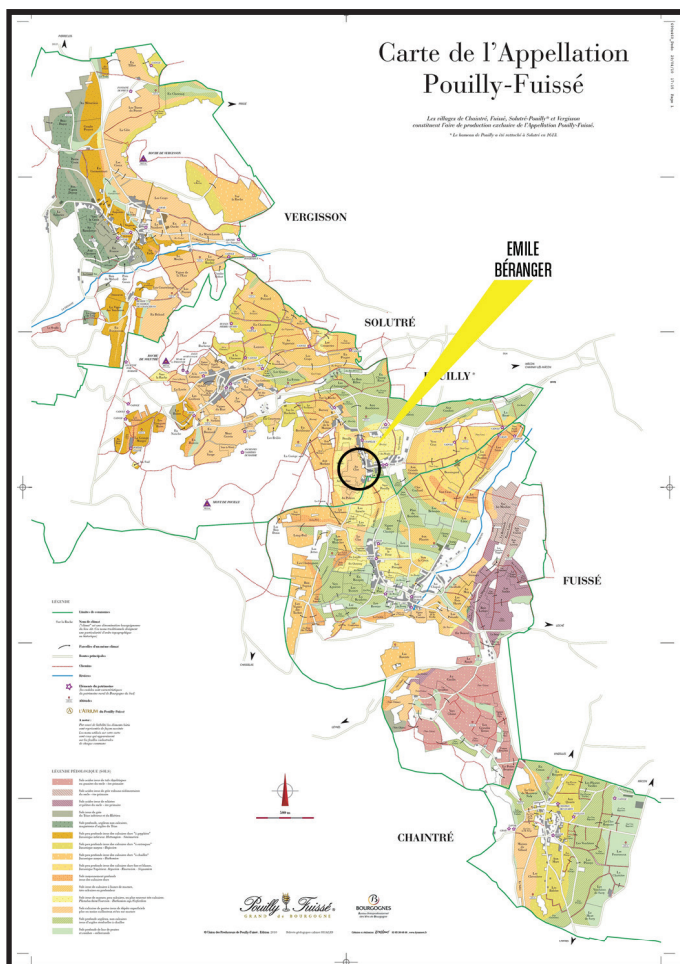
1.5 g/l

pH

3.43

TOTAL ACIDITY

5.12 g/l



ACCOLADES

91 Points - 2015 Vintage - *Wine Spectator*

92 Points - 2014 Vintage - *Wine & Spirits*

NOTES



FAMILY HISTORY

This wine represents a single-estate bottling produced only from the grapes grown on the 12.35 acres that father Emile and son Robert Béranger cultivate with the help of their spouses. Robert, who was born in the house, has been tending the land for more than 50 years. Madame Béranger is also the daughter and granddaughter of winegrowers. The cellar is like a second living room where guests are received, glass in hand, to talk of Pouilly Fuissé.

POUILLY-FUISSÉ

Pouilly-Fuissé is the best known appellation in the Mâconnais, situated along the rocky outcrops of Solutré and Vergisson, along a foundation of fossiliferous limestone similar to that found further north in the Côte-d'Or. Vineyards are planted on clay-limestone soils of Jurassic origin at 650 - 1,00 feet elevation. The wines of Pouilly-Fuissé are made exclusively of Chardonnay, and are beloved for their elegance and charm, typically exhibiting a rich mouthfeel and complex structure complemented by delicate, full flavors of white fruit, citrus and honey with fine minerality.

DOMAINE BÉRANGER POUILLY-FUISSÉ 2016

REGION

Mâconnais

APPELLATION

Pouilly-Fuissé

SURFACE IN ACRES

12.35

AGE OF VINES

Over 20 years

RESIDUAL SUGAR

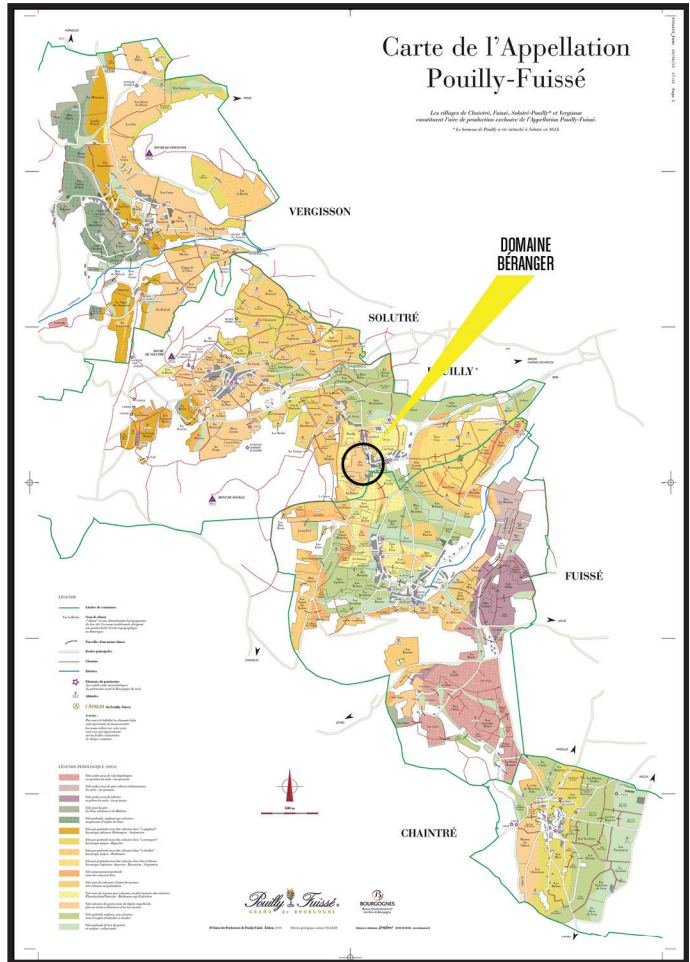
1.5 g/l

pH

3.43

TOTAL ACIDITY

5.12 g/l



ACCOLADES

92 Points - 2016 Vintage - *James Suckling*

90 Points - 2015 Vintage - *Wine Enthusiast*

NOTES



FAMILY HISTORY

The wine is produced from sustainably grown vines in the Duboeuf family's parcel in what is perhaps the best climat of Chaintré, one of the four communes of Pouilly-Fuissé. The clay and limestone terrior give a superb mineral expression to the wine.

POUILLY-FUISSÉ

The four villages of Pouilly-Fuissé, Chaintré, Solutré and Vergisson produce the famous Pouilly-Fuissé wine. The Rocks of Solutré and Vergisson, which wine writer and entrepreneur Alexis Lichine compared to the Rocks of Gibraltar, overlook the vineyards. This region is of historical and prehistoric interest, and in 1987, a prehistory museum was inaugurated in Solutré. It is considered one of the major museums of its kind.

CLOS DÉVOLUET DURAND VERCHÈRES POUILLY-FUISSÉ 2016

REGION

Mâconnais

APPELLATION

Pouilly-Fuissé

SURFACE IN ACRES

4.0

AGE OF VINES

Old Vines

RESIDUAL SUGAR

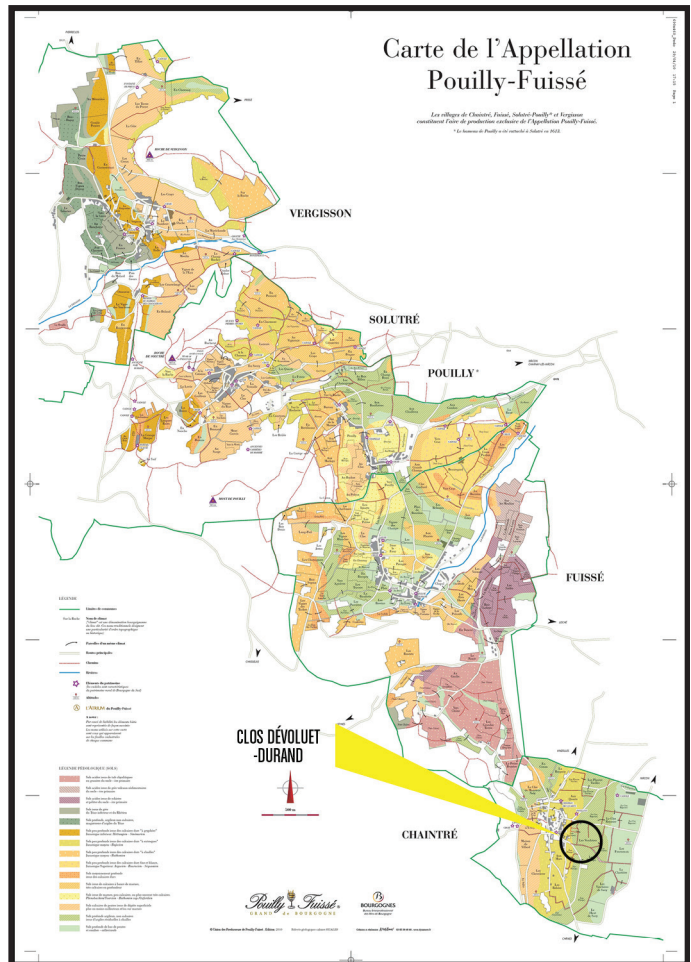
1.9 g/l

pH

3.55

TOTAL ACIDITY

4.43 g/l



ACCOLADES

91 Points - 2016 Vintage - *James Suckling*

NOTES



HISTORY

The world-famous Beaujolais is the most widely-recognized of all the wines produced in the area of the same name. The vineyards are located between the village of Saint-Amour at its northern end and as far south as the outskirts of Lyon, France's second largest city. This is the wine that best exemplifies uncomplicated charm, and it is impossible to duplicate anywhere else. It is only in the heart of its native area of production that true Beaujolais gives the full measure of Gamay at its natural best.

REGION

Beaujolais

APPELLATION

Beaujolais

SURFACE IN ACRES

N/A

AGE OF VINES

Over 20 years

RESIDUAL SUGAR

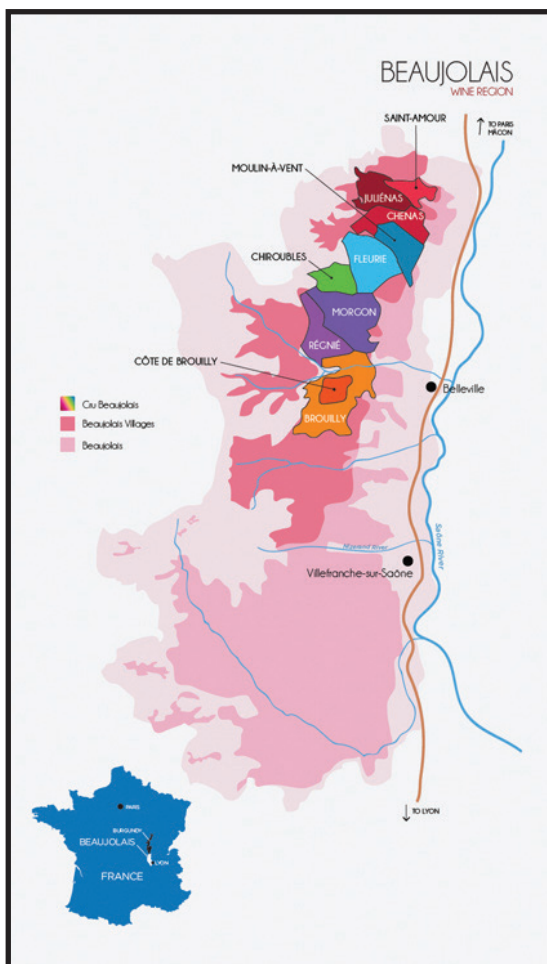
1.9 g/l

pH

3.64

TOTAL ACIDITY

5.35 g/l



NOTES



FAMILY HISTORY

The vineyard stretches across about 50 acres, 25 of which run directly adjacent to the chateau. Denis Chilliet places great importance on making wines that strongly reflect the terroir of his estate. He monitors the soil intelligently and plants cover crops to help manage yields. These vineyards are sustainably developed to protect the soil's natural biodiversity.

BEAUJOLAIS

The world-famous Beaujolais is the most widely-recognized of all the wines produced in the area of the same name. The vineyards are located between the village of Saint-Amour at its northern end and as far south as the outskirts of Lyon, France's second largest city. This is the wine that best exemplifies uncomplicated charm, and it is impossible to duplicate anywhere else. It is only in the heart of its native area of production that true Beaujolais gives the full measure of Gamay at its natural best.



HISTORY

Beaujolais-Villages takes its name from 38 wine-producing villages located in the area of Beaujolais which have long been renowned for the superior quality of their wine. In this instance, “superior” means greater complexity in the bouquet, higher concentration and deeper flavor. Its distinctive character sets a baseline for Beaujolais with its unique, casual charm and the prestigious top ten Cru wines to the north. This is the ideal, multipurpose red wine we all seek.

GEORGES DUBOEU F BEAUJOLAIS-VILLAGES 2016

REGION

Beaujolais

APPELLATION

Beaujolais-Villages

SURFACE IN ACRES

N/A

AGE OF VINES

Over 20 years

RESIDUAL SUGAR

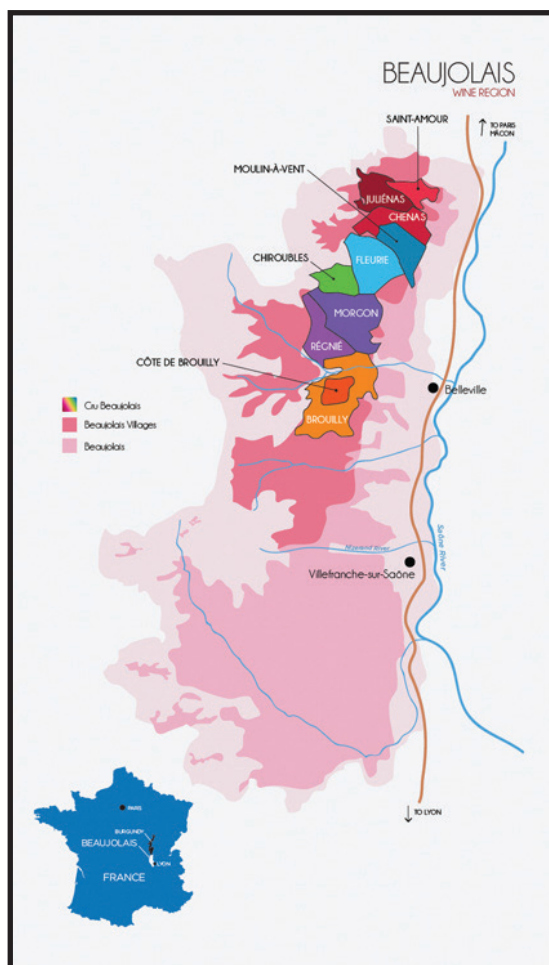
1.3 g/l

pH

3.68

TOTAL ACIDITY

5.58 g/l



ACCOLADES

91 Points - 2015 Vintage - James Suckling

NOTES



FAMILY HISTORY

Château des Vierres and its 12-acre vineyard, planted with vines that are more than 50 years old, is situated on one of the premier Lantignié hillsides overlooking the Ardières Valley. The vines are grown with great care by grower Jean-Marc Branche and his wife.

BEAUJOLAIS-VILLAGES

Beaujolais-Villages takes its name from 38 wine-producing villages located in the area of Beaujolais which have long been renowned for the superior quality of their wine. In this instance, “superior” means greater complexity in the bouquet, higher concentration and deeper flavor. Its distinctive character sets a baseline for Beaujolais with its unique, casual charm and the prestigious top ten Cru wines to the north. This is the ideal, multipurpose red wine we all seek.

CHÂTEAU DES VIERRES BEAUJOLAIS-VILLAGES 2016

REGION

Beaujolais

APPELLATION

Beaujolais-Villages

SURFACE IN ACRES

12.4

AGE OF VINES

Over 50 years

RESIDUAL SUGAR

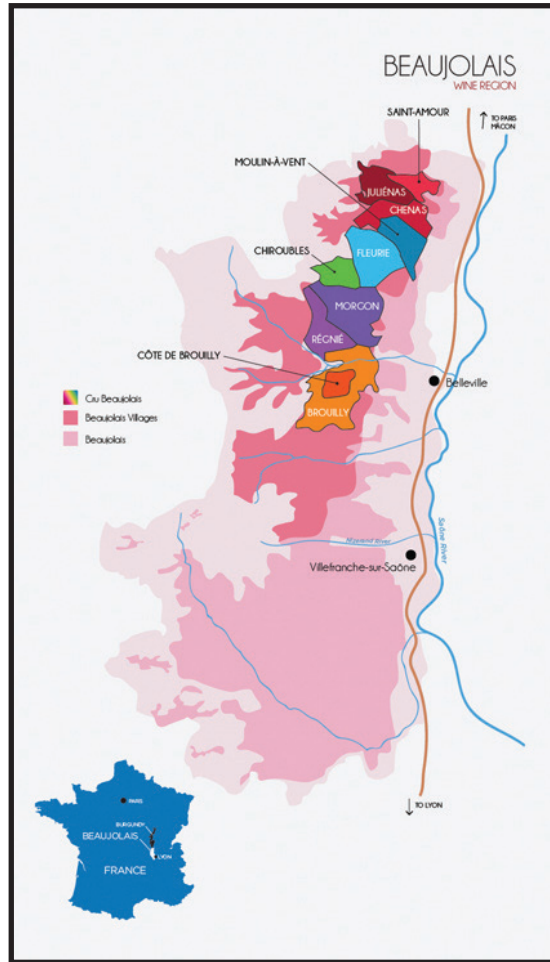
1.3 g/l

pH

3.68

TOTAL ACIDITY

4.89 g/l



NOTES



FAMILY HISTORY

The wine from this 19.8-acre single estate used to be blended into the Flower Label Beaujolais-Villages, but after several vintages of truly distinctive wines, Duboeuf decided to bottle it under its own Domaine name. The estate is located in the small village of Le Perron in Beaujolais. The estate's old vines are harvested manually.

BEAUJOLAIS-VILLAGES

Beaujolais-Villages takes its name from 38 wine-producing villages located in the area of Beaujolais which have long been renowned for the superior quality of their wine. In this instance, "superior" means greater complexity in the bouquet, higher concentration and deeper flavor. Its distinctive character sets a baseline for Beaujolais with its unique, casual charm and the prestigious top ten Cru wines to the north. This is the ideal, multipurpose red wine we all seek.

DOMAINE DES CÔTES DU BERCHOUX BEAUJOLAIS-VILLAGES 2016

REGION

Beaujolais

APPELLATION

Beaujolais-Villages

SURFACE IN ACRES

19.8

AGE OF VINES

Over 50 years

RESIDUAL SUGAR

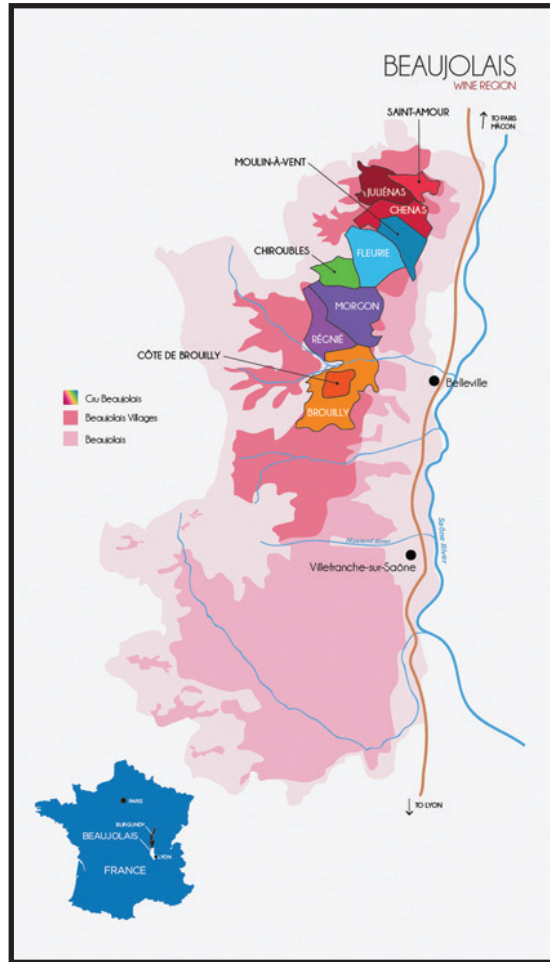
1.9 g/l

pH

3.67

TOTAL ACIDITY

5.05 g/l



ACCOLADES

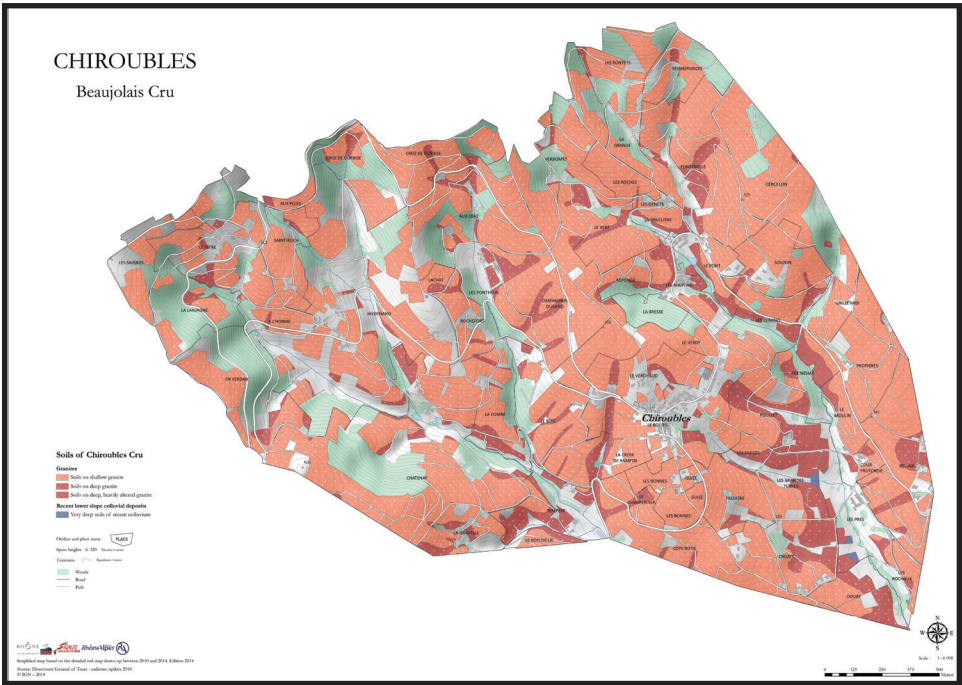
90 Points - 2013 Vintage - *Wine Enthusiast*

NOTES



HISTORY

This is a Cru for those who adore the lighter style of Beaujolais. Grown at the highest altitudes of the region (820-1480 feet), this is also the coolest Cru and the last to begin harvest each year. The wines are “classic Beaujolais” - refined, suave, silky and elegant. Perfumed aromas of peaches and raspberry mixed with lily of the valley and baking spices contribute to the fruity, delicate character.



REGION	SURFACE IN ACRES	RESIDUAL SUGAR	TOTAL ACIDITY
Beaujolais	n/a	1.5 g/l	5.27 g/l
APPELLATION	AGE OF VINES	pH	
Chiroubles	Over 20 years	3.66	

NOTES

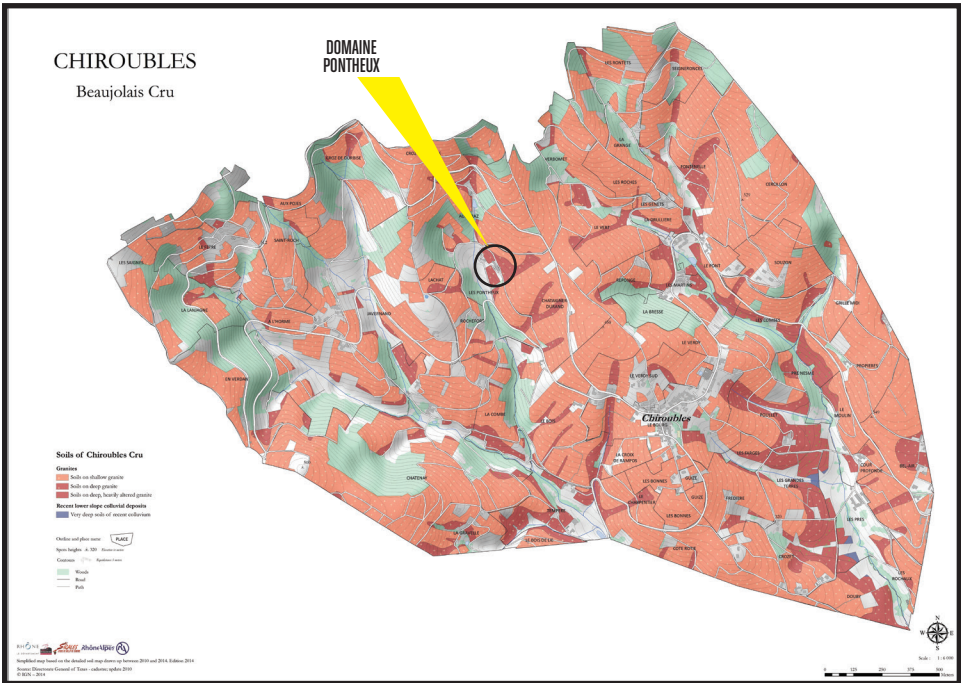


FAMILY HISTORY

The domaine is located within the commune of Chiroubles, at a locale known as Pontheux. The 17-acre estate has been run by the Meziat family and handed down from father to son since 1889. The vineyards face south-southwest on fairly steep slopes; the vines are mainly tended by hand using traditional methods.

CHIROUBLES

This is a Cru for those who adore the lighter style of Beaujolais. Grown at the highest altitudes of the region (820-1480 feet), this is also the coolest Cru and the last to begin harvest each year. The wines are “classic Beaujolais” - refined, suave, silky and elegant. Perfumed aromas of peaches and raspberry mixed with lily of the valley and baking spices contribute to the fruity, delicate character.



REGION	SURFACE IN ACRES	RESIDUAL SUGAR	TOTAL ACIDITY
Beaujolais	17.3	1.4 g/l	4.80 g/l
APPELLATION	AGE OF VINES	pH	
Chiroubles	Over 50 years	3.65	

ACCOLADES

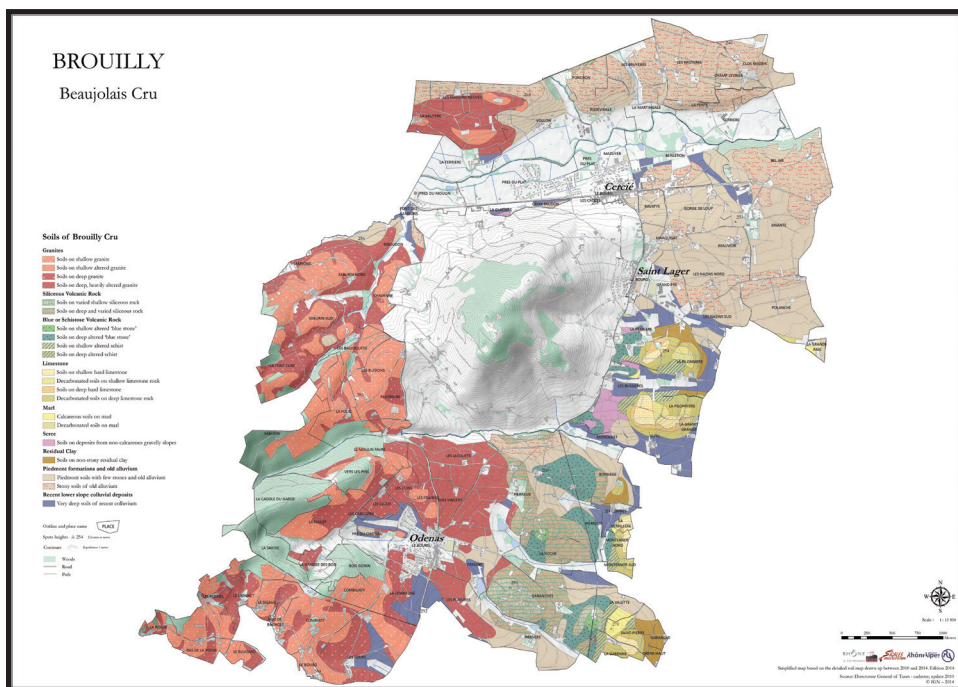
91 Points - 2015 Vintage - *James Suckling*

NOTES



HISTORY

Mount Brouilly is named after Brulius, a famous Roman lieutenant stationed in the area some 2,000 years ago. This is the most southern of all of the Crus and a bit more Mediterranean, with slightly warmer temperatures. As well as being the largest Cru, it was also one of the first areas allowed to sell its wines to the Parisian market as far back as 1769, making Brouilly one of the most well-known areas in Beaujolais. The soil here is unique: a blue/black volcanic rock called Diorite that is known as ‘cornes vertes’ or ‘green horns’. This unique terroir lends an exuberance to the wine’s fruity aromas of jammy plum and strawberry, red currants and peach.



REGION	SURFACE IN ACRES	RESIDUAL SUGAR	TOTAL ACIDITY
Beaujolais	n/a	1.4 g/l	4.9 g/l
APPELLATION	AGE OF VINES	pH	
Brouilly	Over 20 years	3.67	

NOTES

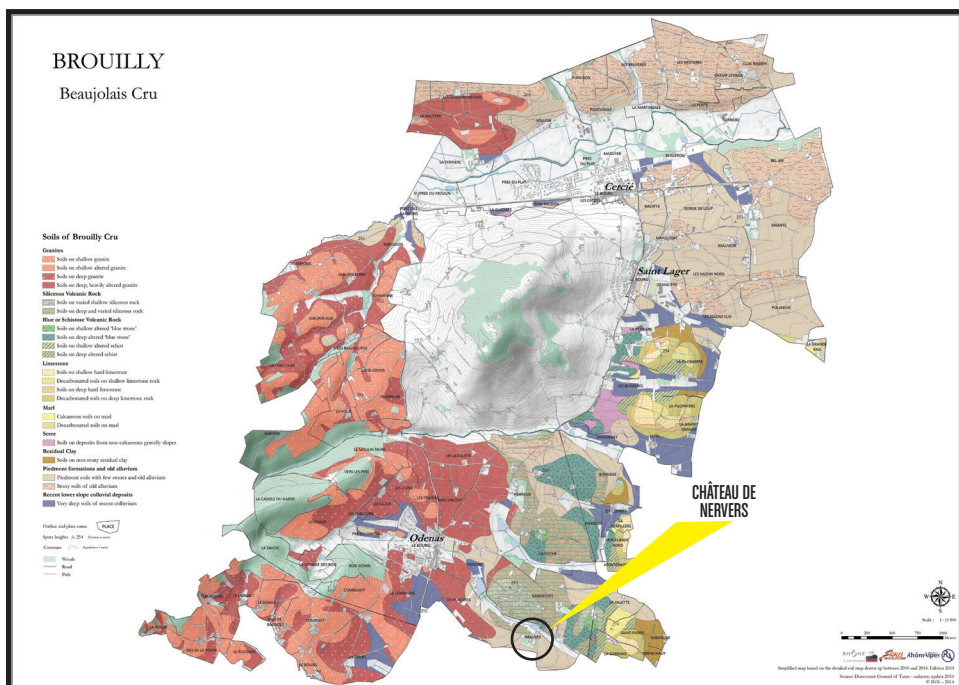


FAMILY HISTORY

This elegant castle is a former hunting lodge that was converted and restored in 1860. The estate is comprised of 116 acres of vineyard situated on one piece of land, a rarity in Beaujolais. The vines, which surround the Chateau and are approximately 140 years old, are tended and cultivated by five winemakers. The yield per acre is relatively low, as is the acidity, which allows for the production of solid, yet rounded wines.

BROUILLY

Mount Brouilly is named after Brulius, a famous Roman lieutenant stationed in the area some 2,000 years ago. This is the most southern of all of the Crus and a bit more Mediterranean, with slightly warmer temperatures. As well as being the largest Cru, it was also one of the first areas allowed to sell its wines to the Parisian market as far back as 1769, making Brouilly one of the most well-known areas in Beaujolais. The soil here is unique: a blue/black volcanic rock called Diorite that is known as 'cornes vertes' or 'green horns'. This unique terroir lends an exuberance to the wine's fruity aromas of jammy plum and strawberry, red currants and peach.



REGION

Beaujolais

SURFACE IN ACRES

116.1

RESIDUAL SUGAR

1.5 g/l

TOTAL ACIDITY

5.12 g/l

APPELLATION

Brouilly

AGE OF VINES

Over 50 years

pH

3.66

NOTES

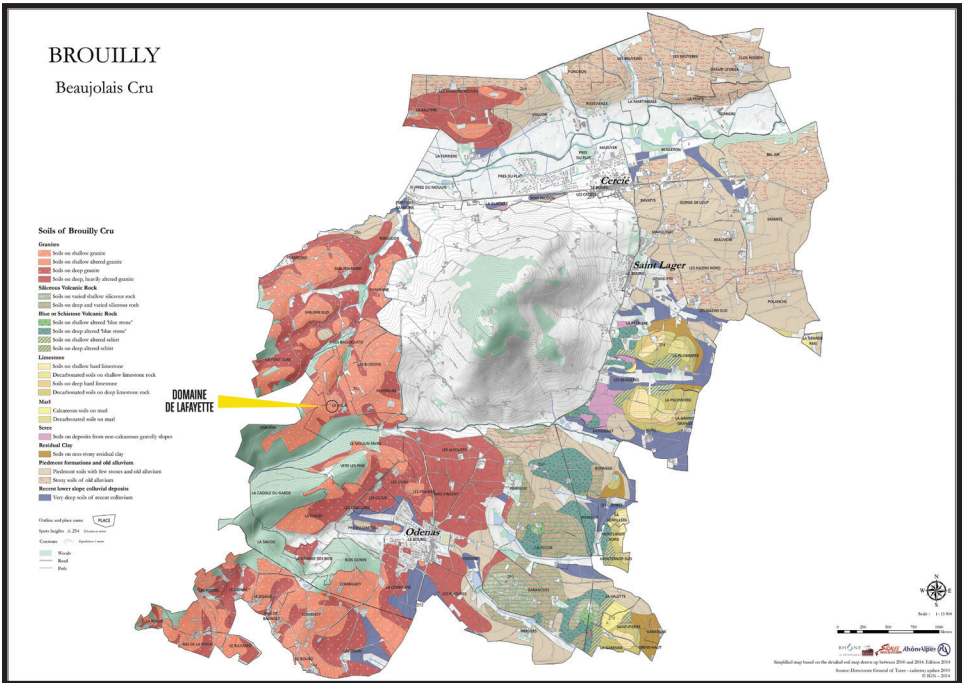


FAMILY HISTORY

The vines of Domaine de Lafayette have been owned and managed by the Gardette family for generations and are located in a lieu-dit called “La Folie.” They are 300 meters above sea level and very densely planted with roughly 10,000 vines per 2.5 acres. Pierre Gardette, the current proprietor, practices vineyard management and winemaking with respect for tradition, terroir and environmental responsibility. His son-in-law Jerome is the current winemaker.

BROUILLY

Mount Brouilly is named after Brulius, a famous Roman lieutenant stationed in the area some 2,000 years ago. This is the most southern of all of the Cru and a bit more Mediterranean, with slightly warmer temperatures. As well as being the largest Cru, it was also one of the first areas allowed to sell its wines to the Parisian market as far back as 1769, making Brouilly one of the most well-known areas in Beaujolais. The soil here is unique: a blue/black volcanic rock called Diorite that is known as ‘cornes vertes’ or ‘green horns’. This unique terroir lends an exuberance to the wine’s fruity aromas of jammy plum and strawberry, red currants and peach.



REGION	SURFACE IN ACRES	RESIDUAL SUGAR	TOTAL ACIDITY
Beaujolais	12.4	1.4 g/l	4.43 g/l
APPELLATION	AGE OF VINES	pH	
Brouilly	Over 50 years	3.75	

ACCOLADES

90 Points - 2016 Vintage - *Wine Enthusiast*

NOTES

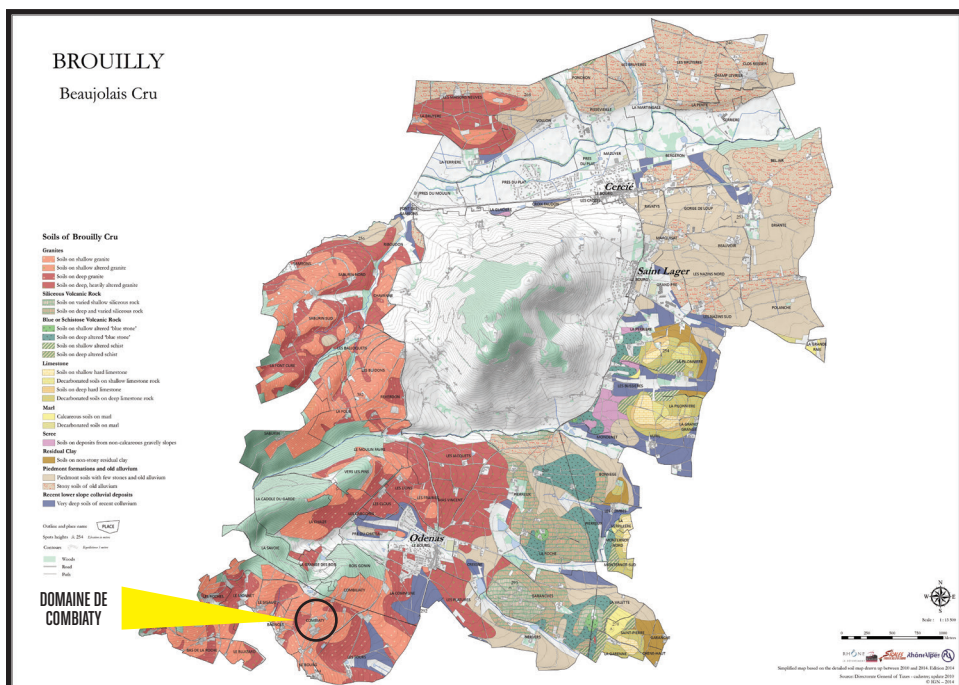


FAMILY HISTORY

The fifteen acres of this family estate are grown on a 15-acre parcel of 60-year-old vines planted to granitic soils in the Cru Beaujolais of Brouilly.

BROUILLY

Mount Brouilly is named after Brulius, a famous Roman lieutenant stationed in the area some 2,000 years ago. This is the most southern of all of the Cru and a bit more Mediterranean, with slightly warmer temperatures. As well as being the largest Cru, it was also one of the first areas allowed to sell its wines to the Parisian market as far back as 1769, making Brouilly one of the most well-known areas in Beaujolais. The soil here is unique: a blue/black volcanic rock called Diorite that is known as 'cornes vertes' or 'green horns'. This unique terroir lends an exuberance to the wine's fruity aromas of jammy plum and strawberry, red currants and peach.



REGION	SURFACE IN ACRES	RESIDUAL SUGAR	TOTAL ACIDITY
Beaujolais	14.8	1.0 g/l	4.9 g/l
APPELLATION	AGE OF VINES	pH	
Brouilly	Over 60 years	3.5	

ACCOLADES

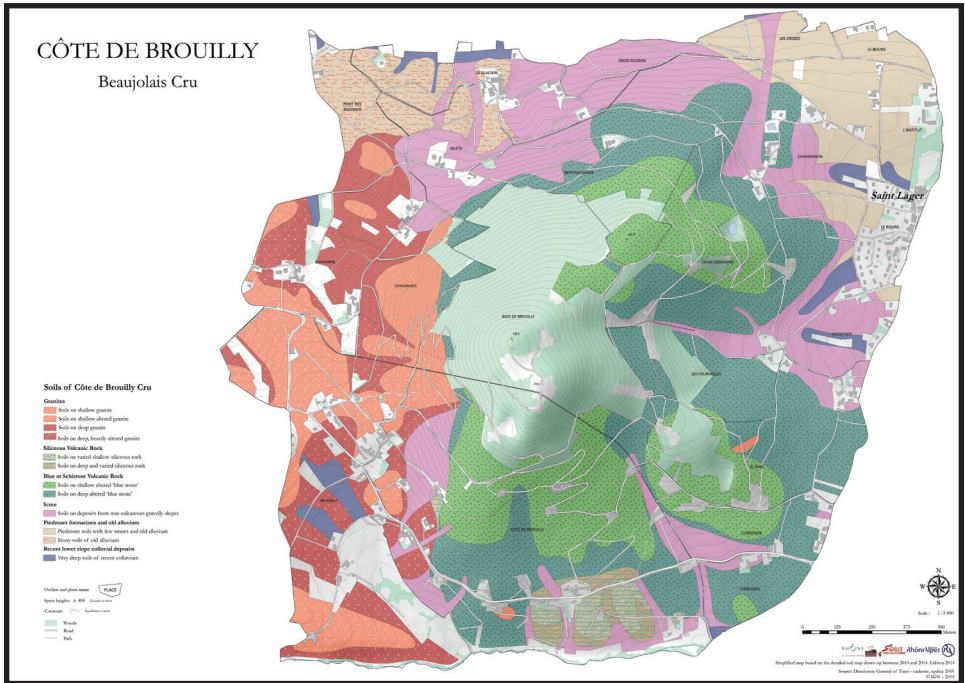
91 Points - 2015 Vintage - *James Suckling*

NOTES



HISTORY

Vineyards can be found planted on the volcanic slopes of Mount Brouilly, giving the wines a unique flavor and delicate minerality. Known as the “Elegant Wine on the Hill,” these are easy drinking wines that exhibit the aromas of fresh grape juice and cranberries, a silky mouthfeel and plenty of bright, refreshing acidity.



REGION	SURFACE IN ACRES	RESIDUAL SUGAR	TOTAL ACIDITY
Beaujolais	n/a	1.5 g/l	5.2 g/l
APPELLATION	AGE OF VINES	pH	
Côte de Brouilly	Over 50 years	3.57	

NOTES

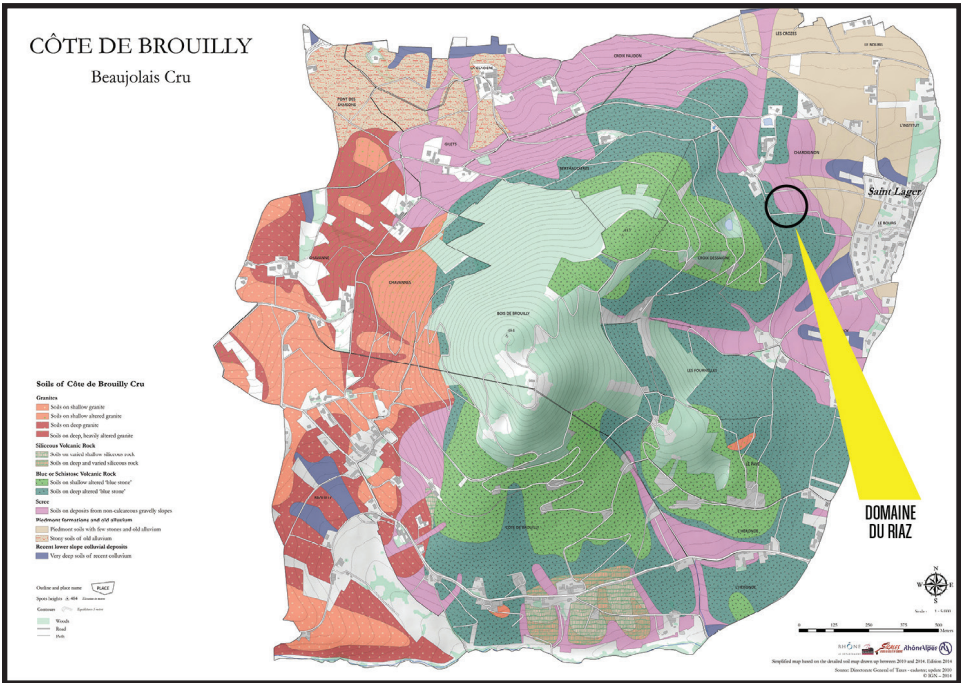


FAMILY HISTORY

Brothers Luc and Arnaud of the Brac de la Pèriere family represent the seventh generation of an ancient Beaujolais lineage. Together, Luc, a vigneron, and Arnaud, a trained biologist, manage the 37 total acres of vineyards on their family estate, located on the slopes of a volcanic hill. This unique terroir gives a pure mineral expression to the wine. The old vines are harvested manually.

CÔTE DE BROUILLY

Vineyards can be found planted on the volcanic slopes of Mount Brouilly, giving the wines a unique flavor and delicate minerality. Known as the “Elegant Wine on the Hill,” these are easy drinking wines that exhibit the aromas of fresh grape juice and cranberries, a silky mouthfeel and plenty of bright, refreshing acidity.



REGION	SURFACE IN ACRES	RESIDUAL SUGAR	TOTAL ACIDITY
Beaujolais	7.4	1.2 g/l	5.58 g/l
APPELLATION	AGE OF VINES	pH	
Côte de Brouilly	Over 50 years	3.55	

ACCOLADES

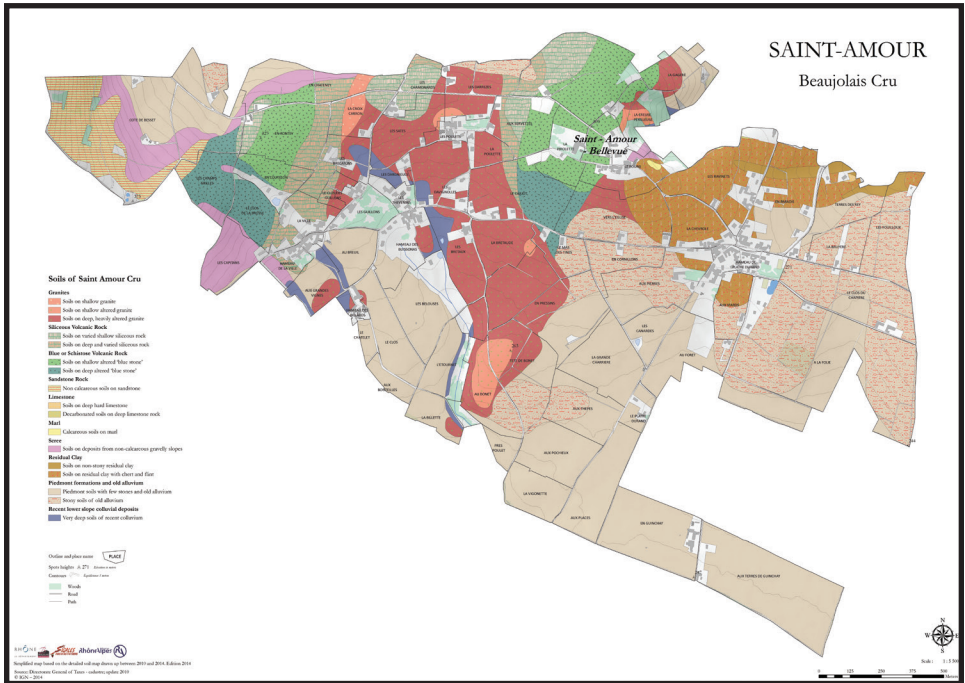
90 Points, Best Buy - 2016 Vintage - *Wine & Spirits*
92 Points - 2015 Vintage - *James Suckling*

NOTES



HISTORY

The region borders the Mâconnais of Burgundy, and there are 12 distinct “climats” or vineyards that can add their name to the label. Two styles of wine are produced here: a light, fruity, floral wine that shows notes of violet and peach, and a bigger, spicier version that becomes more Pinot-like after about 5 years of aging. “The Saint of Love” is the logical wine choice for Valentine’s Day.



REGION	SURFACE IN ACRES	RESIDUAL SUGAR	TOTAL ACIDITY
Beaujolais	49.4	1.4 g/l	5.50 g/l
APPELLATION	AGE OF VINES	pH	
Saint-Amour	Over 20 years	3.44	

NOTES

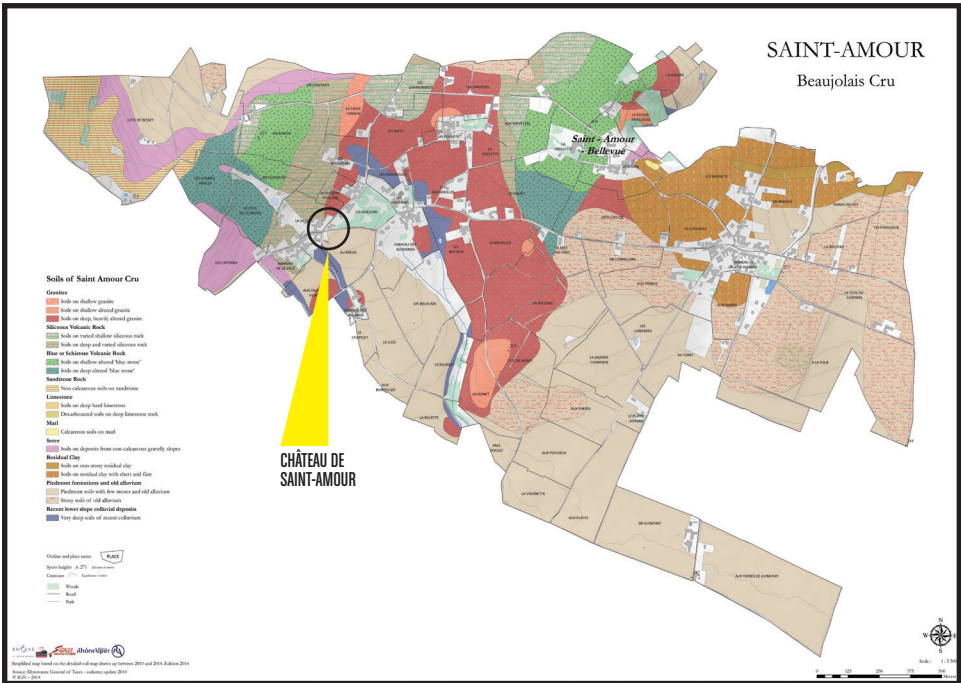


FAMILY HISTORY

The Siraudin family has owned this estate and made wines here since 1478. The family and winemaker Andre Berrod are dedicated to crafting artisanal wines that fully express the unique clay and granite terroir of their estate and vineyards, which are managed sustainably, with little intervention. The vines are more than 20 years old.

SAINT-AMOUR

The region borders the Mâconnais of Burgundy, and there are 12 distinct ‘climats’ or vineyards that can add their name to the label. Two styles of wine are produced here: a light, fruity, floral wine that shows notes of violet and peach, and a bigger, spicier version that becomes more Pinot-like after about 5 years of aging. “The Saint of Love” is the logical wine choice for Valentine’s Day.



REGION	SURFACE IN ACRES	RESIDUAL SUGAR	TOTAL ACIDITY
Beaujolais	49.4	1.4 g/l	5.50 g/l
APPELLATION	AGE OF VINES	pH	
Saint-Amour	Over 20 years	3.44	

ACCOLADES

90 Points, Best Buy - 2015 Vintage - *Wine & Spirits*
 92 Points - 2015 Vintage - *James Suckling*

NOTES



HISTORY

This is “The Queen of Beaujolais”. The vineyards are planted at a higher altitude on the steep slopes at the foot of La Madone. The wines are lighter in style and highly aromatic with a ‘feminine’ quality, exhibiting notes of roses, iris and violet, along with ripe red fruits and peach.

REGION

Beaujolais

APPELLATION

Fleurie

SURFACE IN ACRES

N/A

AGE OF VINES

Over 20 years

RESIDUAL SUGAR

1.4 g/l

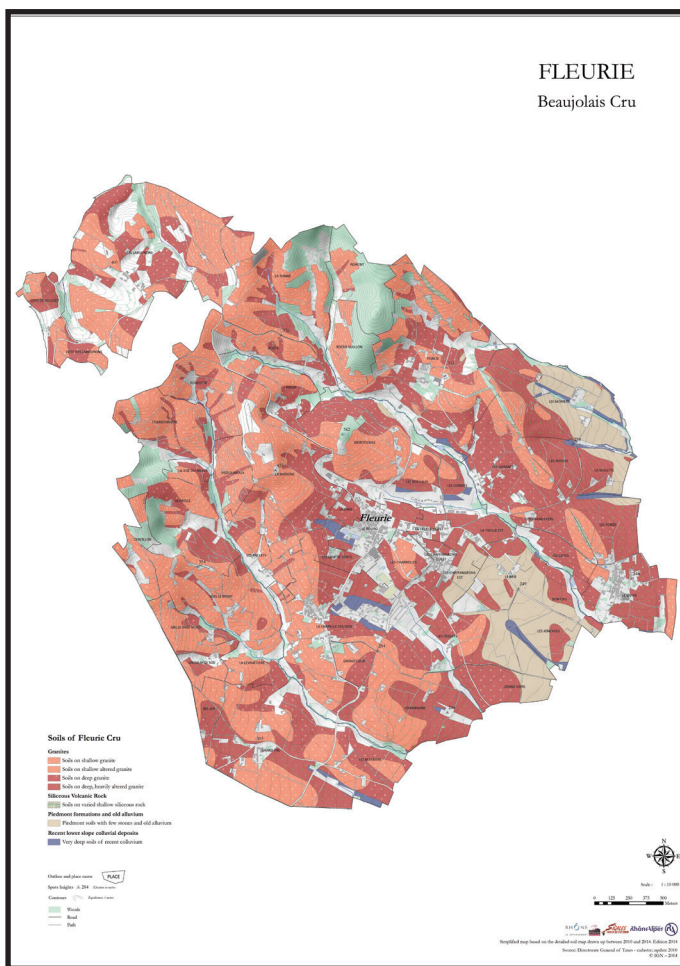
pH

3.61

TOTAL ACIDITY

5.27 g/l

FLEURIE
Beaujolais Cru



ACCOLADES

90 Points, Best Buy - 2016 Vintage - *Wine & Spirits*
93 Points - 2015 Vintage - *James Suckling*

NOTES



FAMILY HISTORY

While “Clos” are common in Burgundy – especially in the Côte d’Or – they are very rare in Beaujolais. Le Clos des Quatre Vents is comprised of about 30 acres owned by the Darroze family. Lovingly tended by two winemakers, Loïc and Cyril, Clos des Quatre Vents has excellent exposure and magnificent granite soil. Georges Duboeuf has purchased the entire production of the estate for 30 years.

FLEURIE

This is “The Queen of Beaujolais”. The vineyards are planted at a higher altitude on the steep slopes at the foot of La Madone. The wines are lighter in style and highly aromatic with a ‘feminine’ quality, exhibiting notes of roses, iris and violet along with ripe red fruits and peach.

REGION

Beaujolais

APPELLATION

Fleurie

SURFACE IN ACRES

29.7

AGE OF VINES

Over 50 years

RESIDUAL SUGAR

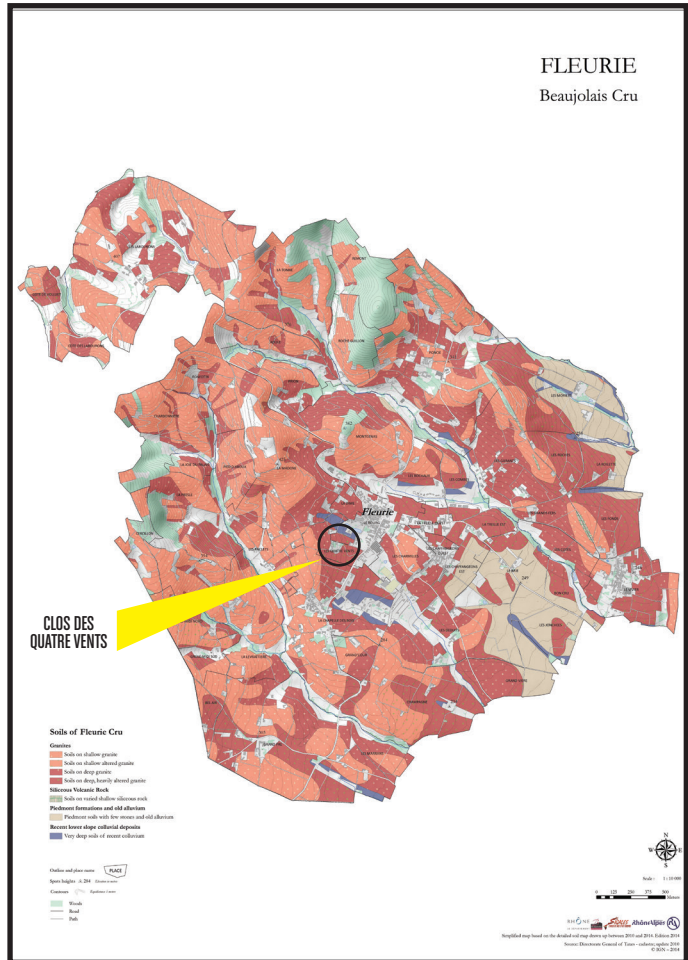
1.3 g/l

pH

3.55

TOTAL ACIDITY

5.13 g/l



ACCOLADES

90 Points - 2016 Vintage - *Wine Advocate*

90 Points - 2015 Vintage - *Wine Advocate*

NOTES



FAMILY HISTORY

While the Clos de Quatre Vents is a wine produced only from grapes grown within the 30-acre “Clos”, the Domaine des Quatre Vents represents a blend of grapes grown on parcels throughout the estate’s total forty-four acres of vineyards owned by the Darroze family at the foot of the famous “La Madone” vineyard in the heart of Fleurie.

FLEURIE

This is “The Queen of Beaujolais”. The vineyards are planted at a higher altitude on the steep slopes at the foot of La Madone. The wines are lighter in style and highly aromatic with a ‘feminine’ quality, exhibiting notes of roses, iris and violet along with ripe red fruits and peach.

REGION

Beaujolais

APPELLATION

Fleurie

SURFACE IN ACRES

44

AGE OF VINES

Over 50 years

RESIDUAL SUGAR

1.2 g/l

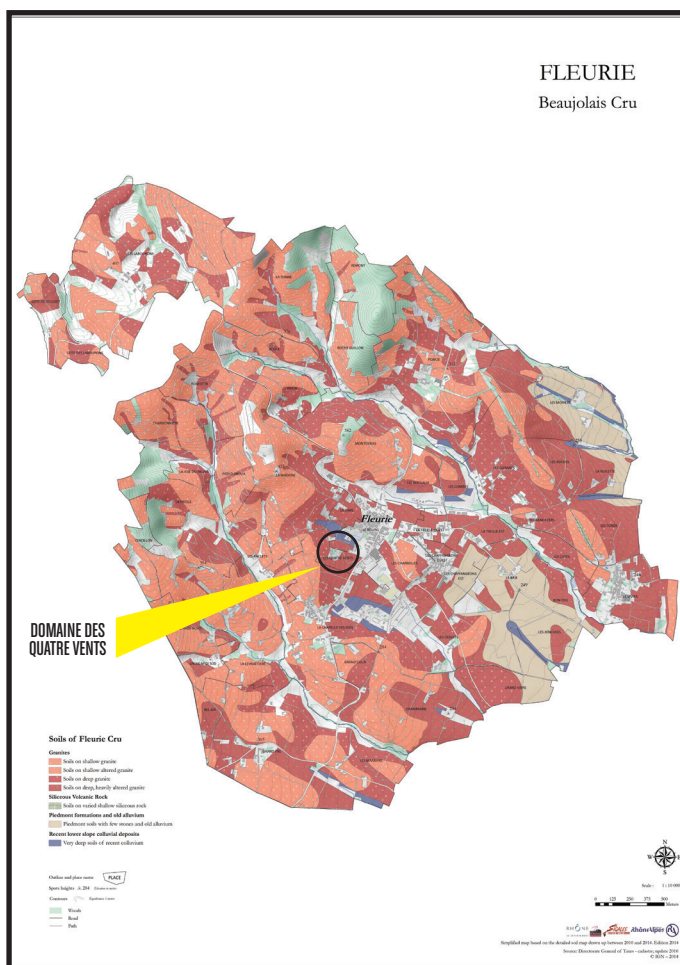
pH

3.58

TOTAL ACIDITY

5.12 g/l

FLEURIE
Beaujolais Cru



ACCOLADES

90 Points - 2016 Vintage - *Wine Enthusiast*

90 Points - 2015 Vintage - *Wine Enthusiast*

89 Points - 2015 Vintage - *Wine Spectator*

NOTES



FAMILY HISTORY

The name La Madone evokes not only the sanctuary visible from afar, but also a climat within the Cru Fleurie. “Climat” is a Bourguignon term for a parcel of vineyards with outstanding quality and merit. Though there are few climats in Beaujolais, each is tended to carefully, with the vines giving glory and honor to the men and women who tend them. In 1870, the winemakers of Fleurie promised the Virgin Mary that if their village were not conquered by the Prussians, that they would build a shrine in Her honor. The Prussians never reached the village, and the winegrowers kept their promise, hence the name of this cuvée, which is sourced from vineyards within the “La Madone” climat.

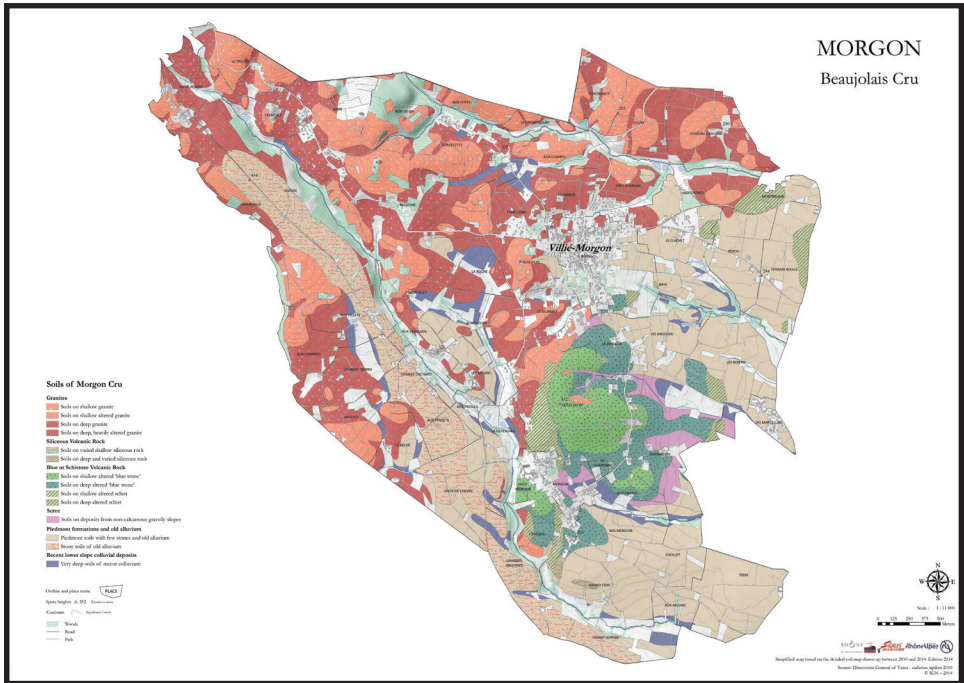
FLEURIE

This is “The Queen of Beaujolais”. The vineyards are planted at a higher altitude on the steep slopes at the foot of La Madone. The wines are lighter in style and highly aromatic with a ‘feminine’ quality, exhibiting notes of roses, iris and violet along with ripe red fruits and peach.



HISTORY

The second largest of the Crus, Morgon is comprised of six “climats”, all with slightly different styles. Their unifying feature is the decomposed schist soil called “roches pourries” or “rotted rocks”, believed to contribute to the ripe cherry aromas found in all the wines. The young, fleshy palate of peach, apricot, cherry and plum will develop into a more earthy wine reminiscent of Burgundian Pinot Noir.



REGION	SURFACE IN ACRES	RESIDUAL SUGAR	TOTAL ACIDITY
Beaujolais	N/A	1.6 g/l	5.27 g/l
APPELLATION	AGE OF VINES	pH	
Morgon	Over 50 years	3.65	

ACCOLADES

93 Points - 2015 Vintage - *James Suckling*
90 Points - 2014 Vintage - *Wine Advocate*

NOTES

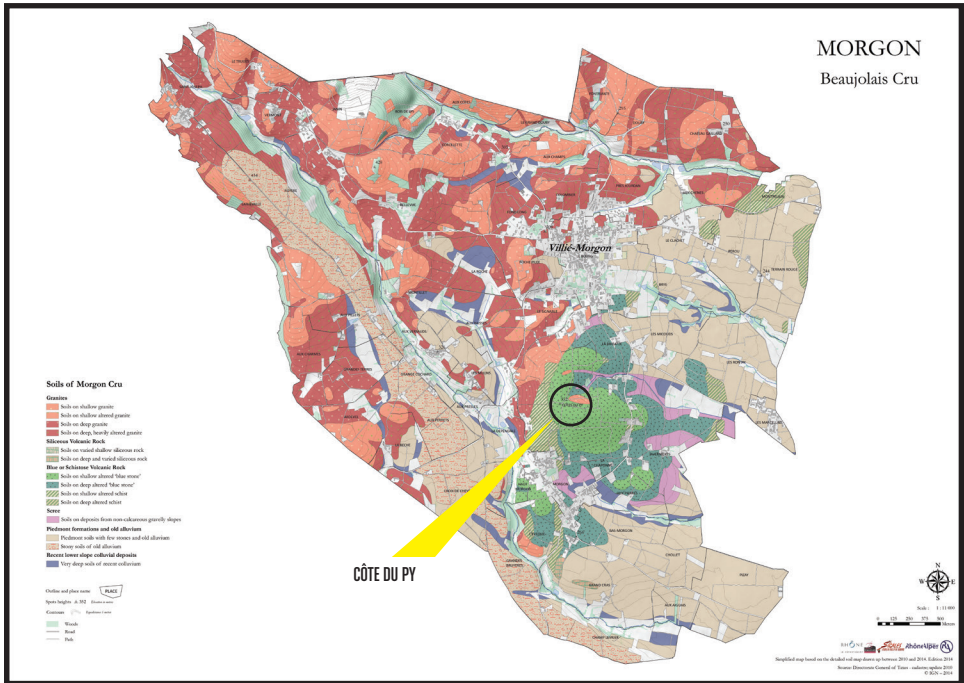


HISTORY

The Côte du Py is the most famous climat (sub-appellation) of Morgon, the flagship Cru of Beaujolais. The terroir of Côte du Py is a combination of crumbly granite and decomposed schist of volcanic origin. Its wines express both fruit and minerality.

MORGON

The second largest of the Crus, Morgon is comprised of six “climats”, all with slightly different styles. Their unifying feature is the decomposed schist soil called “roches pourries” or “rotted rocks”, believed to contribute to the ripe cherry aromas found in all the wines. The young, fleshy palate of peach, apricot, cherry and plum will develop into a more earthy wine reminiscent of Burgundian Pinot Noir.



REGION	SURFACE IN ACRES	RESIDUAL SUGAR	TOTAL ACIDITY
Beaujolais	24.7	1.2 g/l	5.05 g/l
APPELLATION	AGE OF VINES	pH	
Morgon	Over 50 years	3.7	

ACCOLADES

90 Points - 2016 Vintage - *Wine Spectator*
 91 Points - 2015 Vintage - *Wine Enthusiast*
 90 Points - 2015 Vintage - *Wine & Spirits*
 90 Points - 2015 Vintage - *Wine Spectator*
 90 Points - 2014 Vintage - *Wine Enthusiast*

NOTES



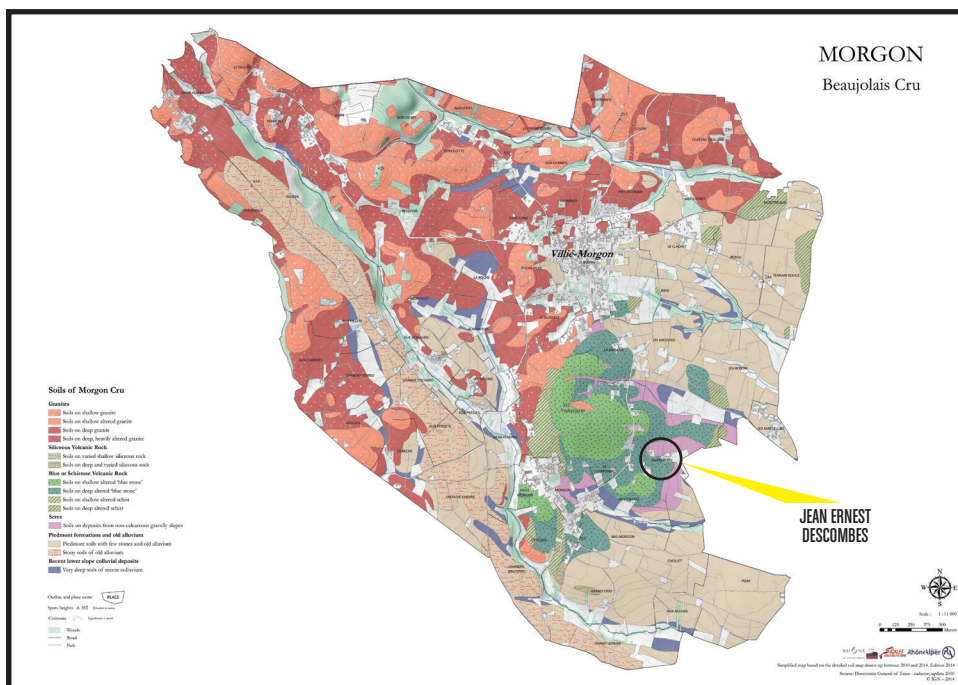
FAMILY HISTORY

Jean-Ernest Descombes devoted thirty years of his life to creating one of the finest Beaujolais estates. He deployed his extraordinary talents in the vineyard and in the cellar. Three-fourths of his vines are more than 50 years old and planted in the best locations, such as the favored climates of La Py, La Roche, La Pillée, Les Pillets and Bellvue. After his passing in 1993, his daughter Nicole took over with an enthusiasm that would have warmed her father's heart. She says that the personality of a wine always conjures up the person who made it, and her wines, made from the vineyards her father so lovingly tended, are no exception.

MORGON

The second largest of the Crus, Morgon is comprised of six "climats", all with slightly different styles. Their unifying feature is the decomposed schist soil called "roches pourries" or "rotted rocks", believed to contribute to the ripe cherry aromas found in all the wines. The young, fleshy palate of peach, apricot, cherry and plum will develop into a more earthy wine reminiscent of Burgundian Pinot Noir.

MORGON
Beaujolais Cru



REGION	SURFACE IN ACRES	RESIDUAL SUGAR	TOTAL ACIDITY
Beaujolais	29.7	1.2 g/l	4.97 g/l
APPELLATION	AGE OF VINES	pH	
Morgon	Over 50 years	3.63	

ACCOLADES

91 Points - 2016 Vintage - *Wine Enthusiast*
 91 Points - 2015 Vintage - *Wine Enthusiast*
 89-91 Points - 2015 Vintage - *Wine Advocate*
 89 Points - 2015 Vintage - *Wine Spectator*

NOTES

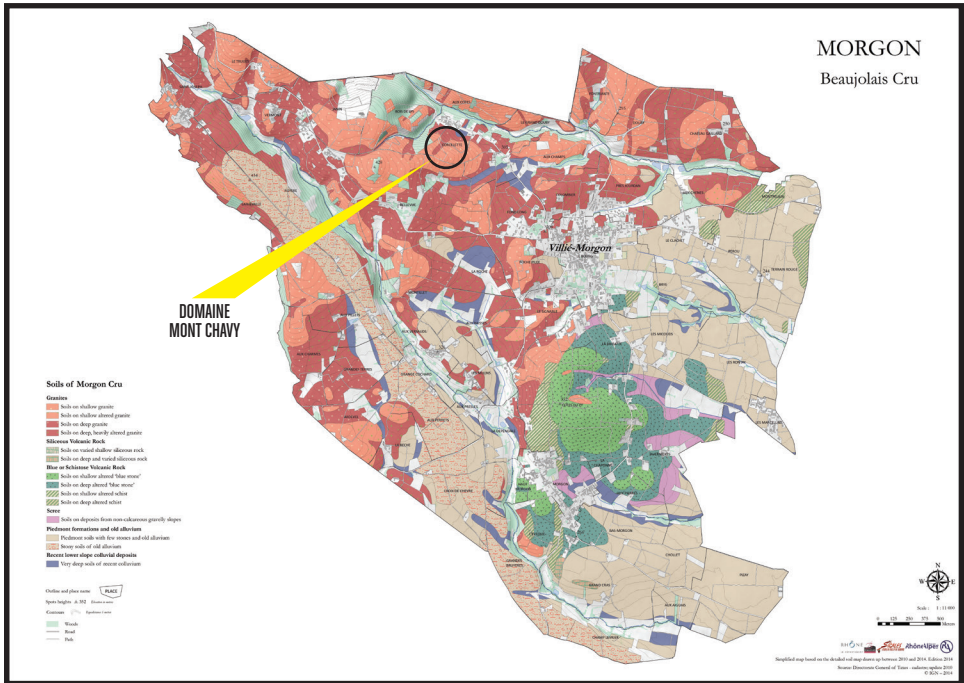


FAMILY HISTORY

Franck and Cyril Chavy are the fourth generation of the Chavy family of vigneronns to tend this Morgon estate, which they work with their father, Henry. Together they cultivate the “Charmes” and “Corcelette” areas. The vines, on average 50 years old, are cultivated with an eye to carefully controlling the yield. Two wine caves, renovated in 2008, enable the Chavy family to develop wines full of finesse and roundness that are consistently awarded medals each year.

MORGON

The second largest of the Crus, Morgon is comprised of six “climats”, all with slightly different styles. Their unifying feature is the decomposed schist soil called “roches pourries” or “rotted rocks”, believed to contribute to the ripe cherry aromas found in all the wines. The young, fleshy palate of peach, apricot, cherry and plum will develop into a more earthy wine reminiscent of Burgundian Pinot Noir.



REGION	SURFACE IN ACRES	RESIDUAL SUGAR	TOTAL ACIDITY
Beaujolais	44.5	1.8 g/l	5.35 g/l
APPELLATION	AGE OF VINES	pH	
Morgon	Over 50 years	3.59	

ACCOLADES

93 Points - 2016 Vintage - *James Suckling*
 89-91 Points - 2015 Vintage - *Wine Advocate*
 90 Points - 2014 Vintage - *Wine Advocate*

NOTES



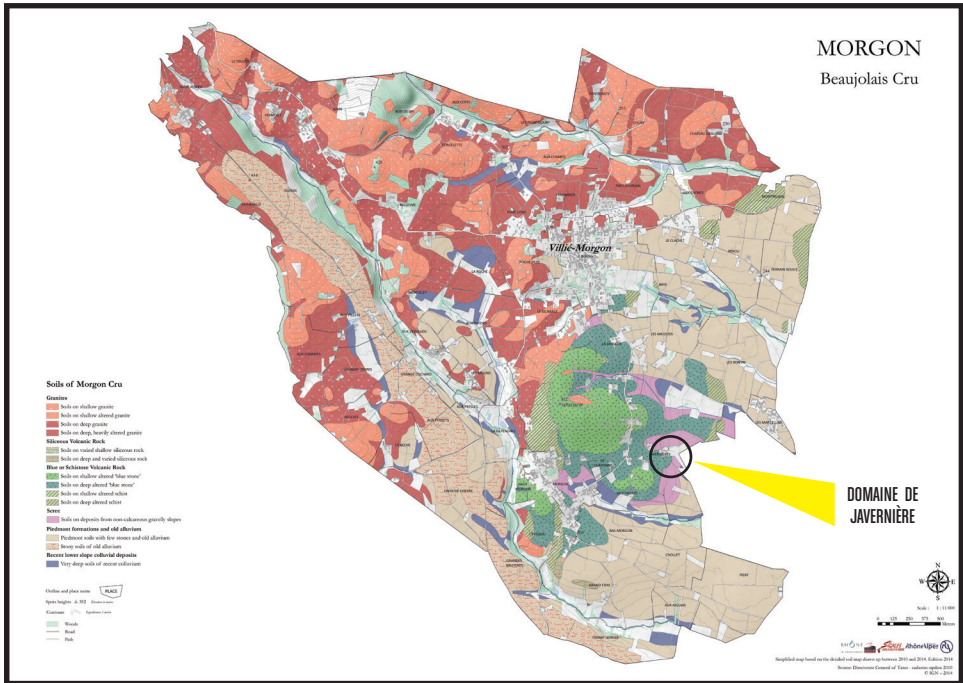
FAMILY HISTORY

Hervé Lacoque represents the fifth generation of his family to make wine from the domaine, having begun at age 17. The Lacoque family owns nearly 30 acres of vineyards across the Côte du Py, Charmes and Corcelette climats. The entire winery operates by gravity-flow, and the average age of the vines is 50-60 years with some up to 100 years old. This cuvée comes from vines planted on the Côte du Py with a combination of crumbly granite and decomposed schist of volcanic origin.

MORGON

The second largest of the Crus, Morgon is comprised of six “climats”, all with slightly different styles. Their unifying feature is the decomposed schist soil called “roches pourries” or “rotted rocks”, believed to contribute to the ripe cherry aromas found in all the wines. The young, fleshy palate of peach, apricot, cherry and plum will develop into a more earthy wine reminiscent of Burgundian Pinot Noir.

DOMAINE DE JAVERNIÈRE CÔTE DU PY MORGON 2016



REGION	SURFACE IN ACRES	RESIDUAL SUGAR	TOTAL ACIDITY
Beaujolais	24.7	1.2 g/l	5.05 g/l
APPELLATION	AGE OF VINES	pH	
Morgon	Over 50 years	3.7	

ACCOLADES

- 90 Points - 2016 Vintage - *Wine Enthusiast*
- 92 Points - 2015 Vintage - *Wine & Spirits*
- 91 Points - 2015 Vintage - *Wine Advocate*
- 91 Points - 2015 Vintage - *Wine Spectator*
- 90 Points - 2015 Vintage - *Wine Enthusiast*

NOTES



HISTORY

Named after Julius Caesar, these ancient Roman vineyard sites are planted on granite, volcanic and clay soils, giving the wines power, structure and terrific aging ability. The floral and fruity aromas of strawberry, peach, violet and spicy cinnamon are common.

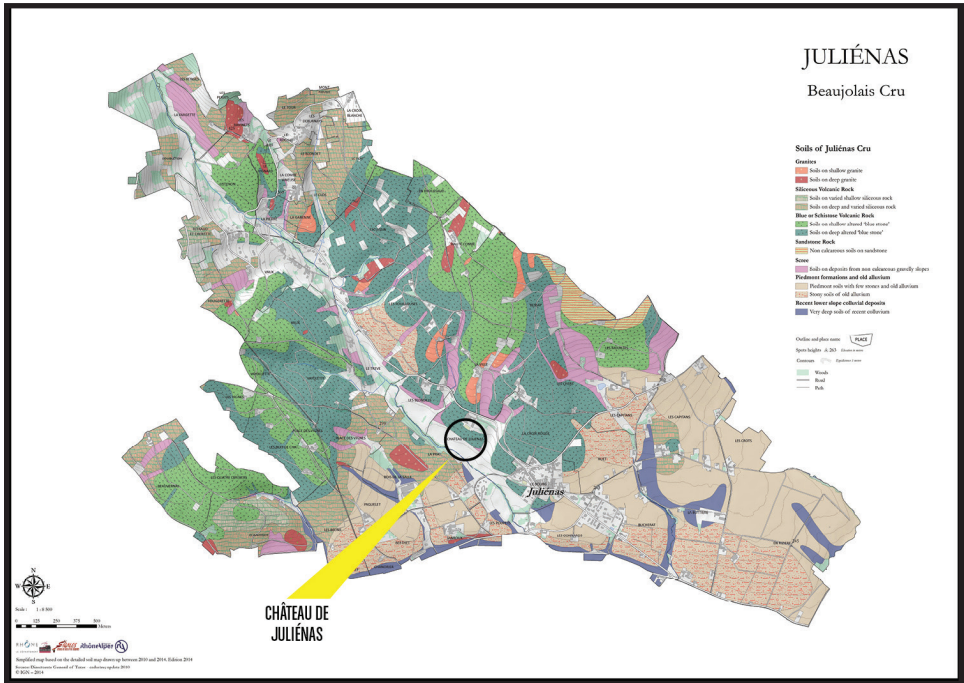


FAMILY HISTORY

In the 13th century, on the site of the current Château, a stronghold was built that belonged to the lord of Beaujeu. The building was altered several times over the centuries and was restored completely after it was bought in 1907 by Claude Condemine. Four generations later, it is now run by Thierry Condemine. The domaine has about 87 acres of vineyards in the Julié纳斯 appellation. The vineyards that surround the Château are, on average, 45 years old and face the south-southeast. Thierry Condemine uses responsible growing methods, and the grapes are picked exclusively by hand. After a traditional vinification, the wine is matured in large barrels for 7 to 8 months until it is bottled.

JULIÉNAS

Named after Julius Caesar, these ancient Roman vineyard sites are planted on granite, volcanic and clay soils, giving the wines power, structure and terrific aging ability. The floral and fruity aromas of strawberry, peach, violet and spicy cinnamon are common.



REGION	SURFACE IN ACRES	RESIDUAL SUGAR	TOTAL ACIDITY
Beaujolais	2.5	1.50 g/l	5.88 g/l
APPELLATION	AGE OF VINES	pH	
Julié纳斯	Over 50 years	3.42	

ACCOLADES

90 Points - 2015 Vintage - *Wine Enthusiast*
90 Points - 2015 Vintage - *Wine Spectator*

NOTES

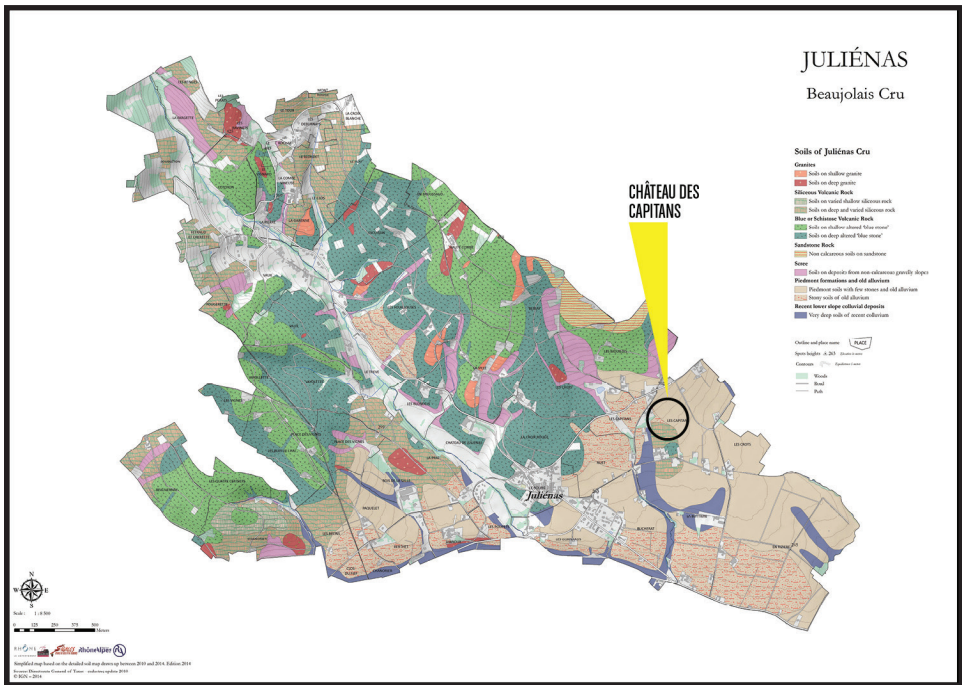


FAMILY HISTORY

This 19th century castle is situated right in the heart of AOC Cru Julié纳斯, in a locality known as Les Capitans. Centuries-old cedar trees in the stately gardens stand as tall sentinels of a long, illustrious past. The remarkably old vines form one single, undivided vineyard circling the estate and benefit from optimal soil and microclimate conditions. South-southeast hillside exposure to the sun allows the grapes to attain perfect ripening before they are harvested. This estate is owned by the Duboeuf family.

JULIÉNAS

Named after Julius Caesar, these ancient Roman vineyard sites are planted on granite, volcanic and clay soils, giving the wines power, structure and terrific aging ability. The floral and fruity aromas of strawberry, peach, violet and spicy cinnamon are common.



REGION	SURFACE IN ACRES	RESIDUAL SUGAR	TOTAL ACIDITY
Beaujolais	29.7	1.5 g/l	5.9 g/l
APPELLATION	AGE OF VINES	pH	
Juliéna	Over 50 years	3.45	

ACCOLADES

90 Points, Editors' Choice - 2016 Vintage - *Wine Enthusiast*
 90 Points - 2015 Vintage - *Wine Advocate*
 90 Points - 2015 Vintage - *Wine Enthusiast*
 90 Points - 2015 Vintage - *Wine Spectator*

NOTES



HISTORY

Moulin-à-Vent is known as the “King of Beaujolais”, and the Cru’s vineyards are planted on decomposed pink granite and soft flaky quartz, giving the wines excellent structure and complexity. These wines are the most full-bodied and tannic of the Crus. The Cru gets its name from an ancient windmill built in the 15th century that is perched on a high hill, completely surrounded by vines.

REGION

Beaujolais

APPELLATION

Moulin-à-Vent

SURFACE IN ACRES

N/A

AGE OF VINES

Over 50 years

RESIDUAL SUGAR

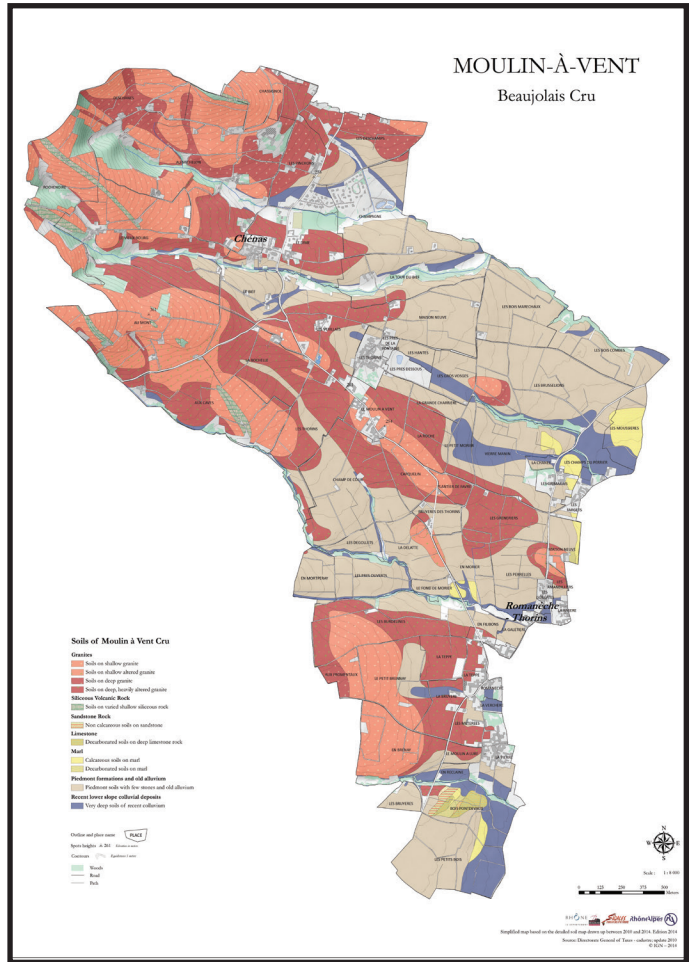
1.5 g/l

pH

3.64

TOTAL ACIDITY

5.05 g/l



ACCOLADES

90 Points - 2016 Vintage - *Wine Spectator*

90 Points - 2015 Vintage - *Wine Enthusiast*

90 Points - 2015 Vintage - *Wine Spectator*

NOTES



FAMILY HISTORY

Domaine du Pourpre is run by the Meziat family, now in its fifth generation, in the commune of Chénas. Located in one of the very best terroirs of the Cru Beaujolais region, on the high slopes of Chénas, its old vines are sustainably grown and manually harvested.

MOULIN-À-VENT

Moulin-à-Vent is known as the “King of Beaujolais”, and the Cru’s vineyards are planted on decomposed pink granite and soft flaky quartz, giving the wines excellent structure and complexity. These wines are the most full-bodied and tannic of the Crus. The Cru gets its name from an ancient windmill built in the 15th century that is perched on a high hill, completely surrounded by vines.

DOMAINE DU POURPRE MOULIN-À-VENT 2016

REGION

Beaujolais

APPELLATION

Moulin-à-Vent

SURFACE IN ACRES

37.1

AGE OF VINES

Over 50 years

RESIDUAL SUGAR

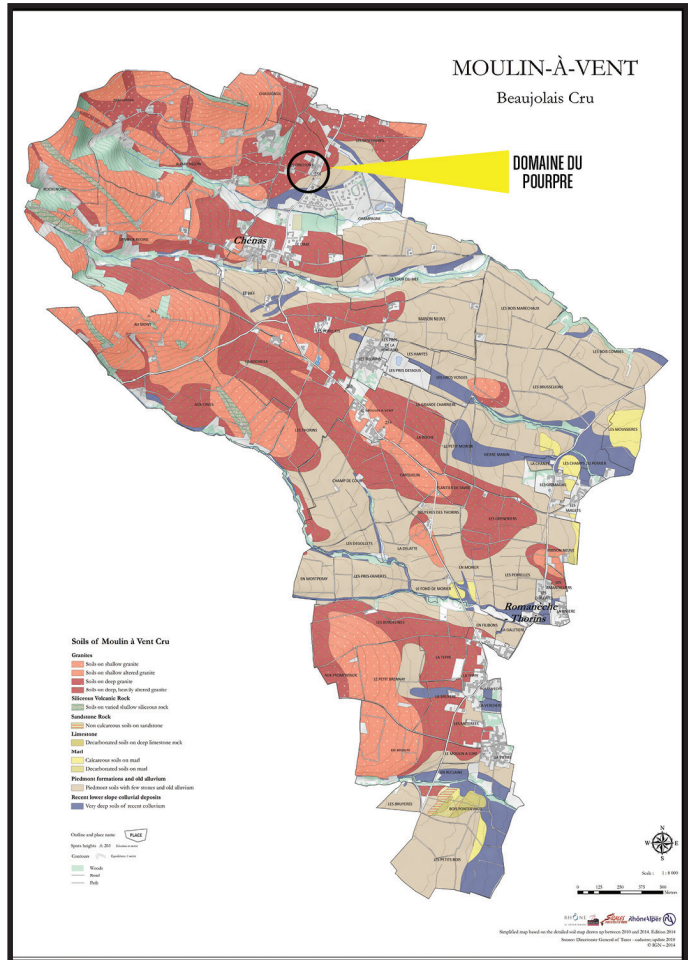
1.3 g/l

pH

3.61

TOTAL ACIDITY

5.35 g/l



ACCOLADES

89-91 Points - 2015 Vintage - *Wine Advocate*

91 Points - 2014 Vintage - *Wine Enthusiast*

NOTES



FAMILY HISTORY

Gérard Charvet, owner of the “Rosebush” (“Rosier” in French) Estate, exhibits an incurable passion for cultivating the earth of the prestigious Cru, Moulin-à-Vent. His forebearers settled in the village of Chénas over a century ago and their work ethic set the standard that molded him into a hardworking and meticulous winemaker. After the death of his father in 1983, Gérard took over the estate with admirable talent. Gérard uses stainless steel and oak barrels, producing wines that reflect the benefits of both methods. Georges Duboeuf has been purchasing Gérard’s entire production since 1976.

MOULIN-À-VENT

Moulin-à-Vent is known as the “King of Beaujolais”, and the Cru’s vineyards are planted on decomposed pink granite and soft flaky quartz, giving the wines excellent structure and complexity. These wines are the most full-bodied and tannic of the Crus. The Cru gets its name from an ancient windmill built in the 15th century that is perched on a high hill, completely surrounded by vines.

DOMAINE DES ROSIERS MOULIN-À-VENT 2016

REGION

Beaujolais

APPELLATION

Moulin-à-Vent

SURFACE IN ACRES

29.7

AGE OF VINES

Over 50 years

RESIDUAL SUGAR

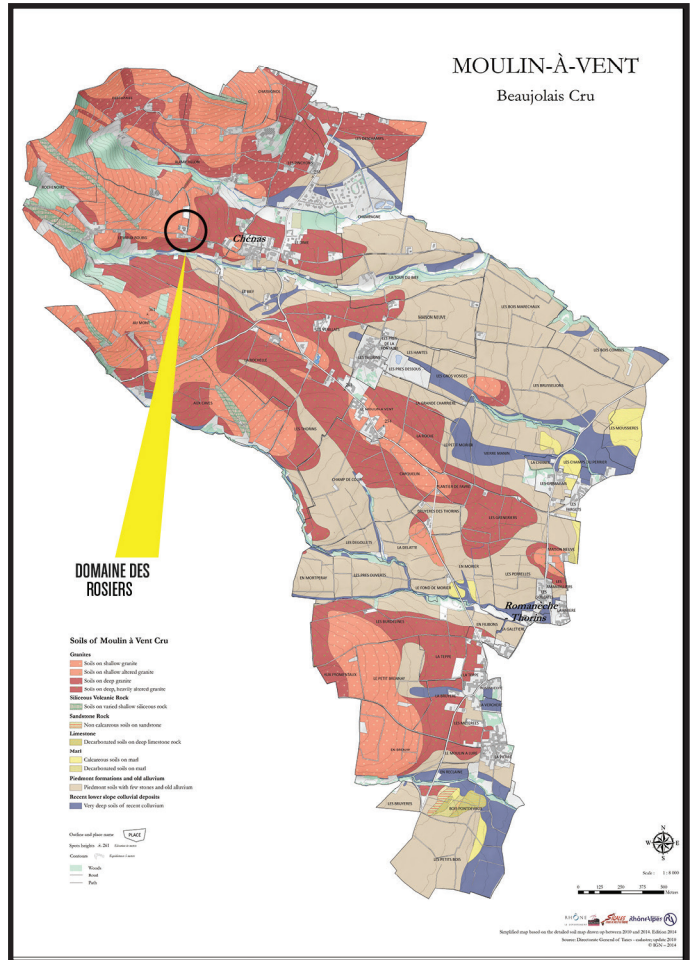
1.5 g/l

pH

3.72

TOTAL ACIDITY

4.90 g/l



ACCOLADES

91 Points - 2016 Vintage - *Wine Enthusiast*

91 Points - 2016 Vintage - *Wine Spectator*

90 Points - 2015 Vintage - *Wine Enthusiast*

90 Points - 2015 Vintage - *Wine Spectator*

90-91 Points - 2014 Vintage - *Wine Advocate*

NOTES



FAMILY HISTORY

This domaine is situated in the commune of Romanèche-Thorins, which was the site of one of the first Roman farms, and its vineyards are likely the oldest in the region. The domaine's name is an obvious reminder of this long history. It has been run by the Gimaray family for generations. The vines are 40 years old on average and face south-southeast.

MOULIN-À-VENT

Moulin-à-Vent is known as the “King of Beaujolais”, and the Cru's vineyards are planted on decomposed pink granite and soft flaky quartz, giving the wines excellent structure and complexity. These wines are the most full-bodied and tannic of the Crus. The Cru gets its name from an ancient windmill built in the 15th century that is perched on a high hill, completely surrounded by vines.

DOMAINE DE LA VIGNE ROMAINE MOULIN-À-VENT 2016

REGION

Beaujolais

APPELLATION

Moulin-à-Vent

SURFACE IN ACRES

6.2

AGE OF VINES

Over 40 years

RESIDUAL SUGAR

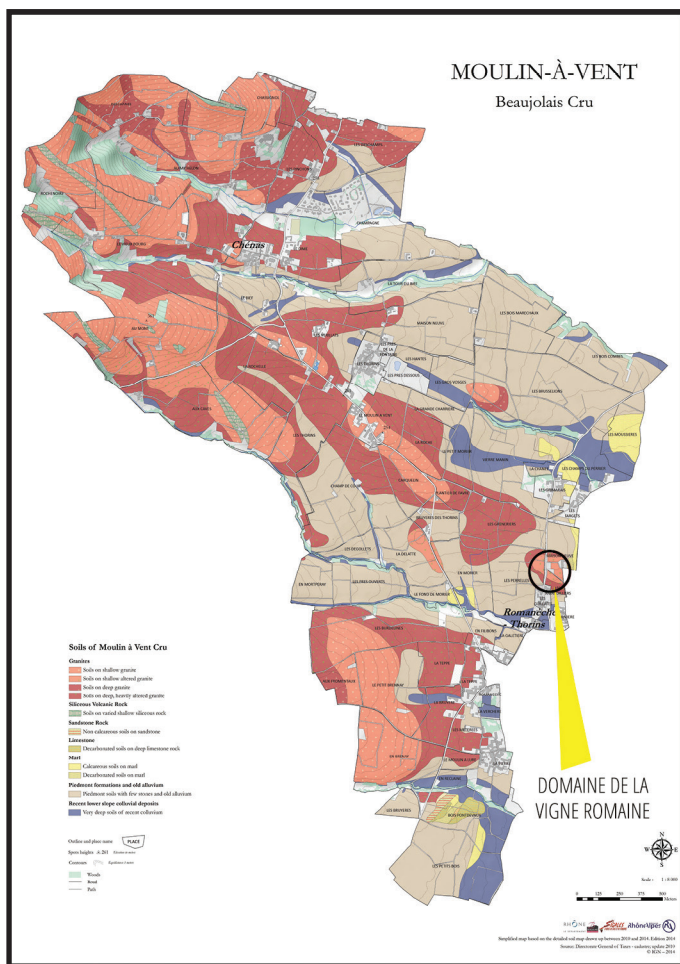
1.5 g/l

pH

3.51

TOTAL ACIDITY

5.43 g/l



ACCOLADES

91 Points - 2016 Vintage - *Wine Enthusiast*

92 Points - 2015 Vintage - *Wine Enthusiast*

89-91 Points - 2015 Vintage - *Wine Advocate*

NOTES

